

F Series

Miniature ROTA-SLIDE® Rotary Switches

Features/Benefits

- Multi-pole and multi-position
- Panel and PCB mounting
- Positive detent
- Value added capability
- RoHS Compliant

Typical Applications

- Small appliances
- Testing fixtures
- Safety equipment



Specifications

CONTACT RATING: Q contact material: 4 AMPS @ 125 V AC or 28 V DC; 2 AMPS @ 250 V AC (UL/CSA). See page L-40 for additional ratings.

ELECTRICAL LIFE: 10,000 make-and-break cycles at full load.

CONTACT RESISTANCE: Below 10 m Ω typ. initial @ 2-4 V DC, 100 mA, for both silver and gold plated contacts.

INSULATION RESISTANCE: 10⁹ Ω min.

DIELECTRIC STRENGTH: 1,000 Vrms min. @ sea level.

INDEXING: 45° or 90° -one contact models; two contact models, 4 pos. max. Models with common terminal -90°, 4 pos. max.

OPERATING & STORAGE TEMPERATURE: -30°C to 65°C

Materials

HOUSING & BUSHING: 6/6 Nylon (UL 94V-2).

ACTUATOR: 6/6 nylon (UL 94V-2).

CONTACTS: Q contact material: Copper, silver plated. See page K-40 for additional contact materials.

TERMINALS: Q contact material: Copper, silver plated. See page K-39 for additional contact materials.

CONTACT SPRING: Music wire or stainless steel.

MOUNTING NUT: Brass, nickel plated.

TERMINAL SEAL: Epoxy.

NOTE: Any models supplied with Q or B contact material are RoHS compliant.

NOTE: Specifications and materials listed above are for switches with standard options. For information on specific and custom switches, consult Customer Service Center.

Build-A-Switch

To order, simply select desired option from each category and place in the appropriate box. Available options are shown and described on pages K-34 thru K-36. For additional options not shown in catalog, consult Customer Service Center.

<div>Switch Function</div> <div><div>FA05</div> SP, 90° Index, 3 pos.</div> <div><div>F103</div> SP, 45° Index, 3 pos.</div> <div><div>F203</div> DP, 45° Index, 3 pos.</div> <div><div>FA01</div> SPDT, 90° Index</div> <div><div>FC03</div> SP, W/Common 90° Index, 3 pos.</div>
--



Dimensions are shown: mm
Specifications and dimensions subject to change



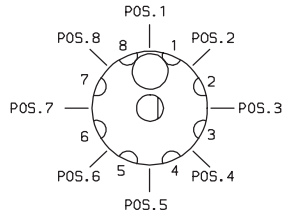
K

Rotary

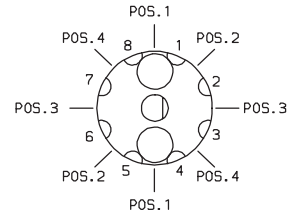
F Series Miniature ROTA-SLIDE® Rotary Switches

45° INDEXING			
NO. POLES	MODEL NO.	SWITCH FUNCTION	TERMINALS
SP	F103	3 Position	8-1-2-3*
DP	F203	3 Position	All Terminals

45° INDEXING SCHEMATICS



F1XX MODELS



F2XX MODELS

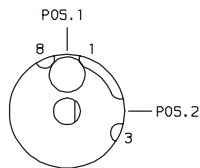
Break-before-make contacts. Terminal numbers are molded on bottom of housing. Actuators are shown in position 1.

F1XX, F2XX models: No common terminal is present. Switching function is provided by movable contacts shorting adjacent pairs of stationary contacts.

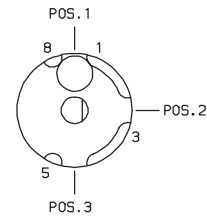
NOTE: *Switches with '02' PC terminations have additional terminal no. 5 as switch support only. This terminal is not connected electrically inside switch.

90° INDEXING			
NO. POLES	MODEL NO.	SWITCH FUNCTION	TERMINALS
SP	FA01	SPDT	8-1-3
	FA05	3 Position	8-1-3-5
SP WITH COMMON	FC03	3 Position	C-1,C-2,C-3

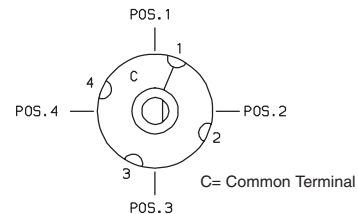
90° INDEXING SCHEMATICS



FA01 MODEL



FA05 MODEL



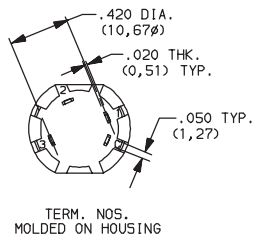
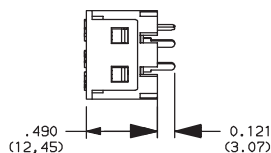
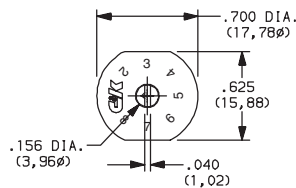
FCXX MODEL

Break-before-make contacts. Terminal numbers are molded on bottom of housing. Actuators are shown in position 1.

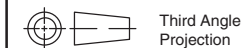
FAXX models: No common terminal is present. Switching function is provided by movable contacts shorting adjacent pairs of stationary contacts.

FCXX models: Common terminal is present.

NOTE: *Switches with '02' PC terminations have additional terminal no. 5 as switch support only. This terminal is not connected electrically inside switch.



Part number show: FC0315RN02Q

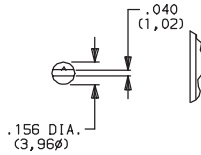


Dimensions are shown: Inch (mm)
Specifications and dimensions subject to change

F Series Miniature ROTA-SLIDE® Rotary Switches

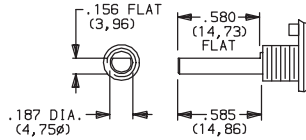
ACTUATOR

15 SCREWDRIVER SLOT WITHOUT BUSHING



Shown with 'RN' mounting style; not available with 'RS' mounting style or FCXX models.

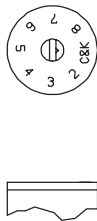
08 .585" HIGH WITH .156" FLA



Must be ordered with 'RS' mounting style.

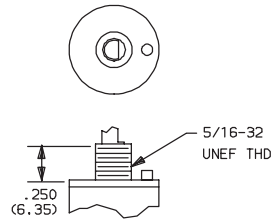
MOUNTING STYLE

RN PC



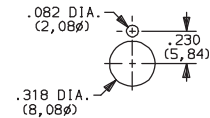
PC mount, no bushing, position numbers molded standard. Shown with '15' actuator; not available with '08' actuator or FCXX models.

RS 5/16-32 THREADED BUSHING



Panel mount, with 5/16 in.-32 threaded bushing. Mounting nut (P/N 175020201) included. Must be ordered with '08' actuator option.

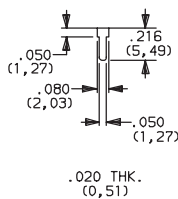
PANEL MOUNTING



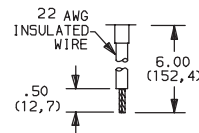
5/16 IN. BUSHING

TERMINATIONS

02 PC THRU-HOLE



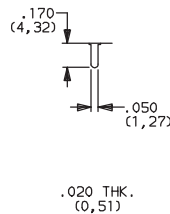
WC WIRE LEAD



Black wire standard, other colors and lengths available, consult Customer Service Center. UL style 1015.

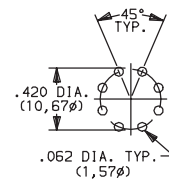
F1XX, F2XX & FAXX Models

02 PC THRU-HOLE



FCXX Models

PC MOUNTING



Third Angle
Projection

Dimensions are shown: mm
Specifications and dimensions subject to change



K

Rotary

F Series

Miniature ROTA-SLIDE® Rotary Switches



CONTACT MATERIAL

OPTION CODE	CONTACT AND TERMINAL MATERIAL	RATING	
Q	SILVER ²	POWER	4 AMPS @ 125 V AC or 28 V DC; 2 AMPS @ 250 V AC (UL/CSA).
B	GOLD ¹	LOW LEVEL/DRY CIRCUIT	0.4 VA MAX. @ 20 V AC or DC MAX.

* Note: See Technical Data section of this catalog for RoHS compliant and compatible definition and specifications.

¹ CONTACTS & TERMINALS: Copper, with gold plate over nickel plate.
² CONTACTS & TERMINALS: Copper, silver plated (standard with all termination options).

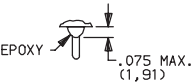
NOTE: Any models supplied with Q or B contact material are RoHS compliant.

All models   with all options when ordered with 'Q' contact material.

SEAL

NONE NO SEAL

E EPOXY SEAL

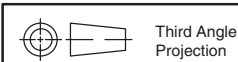


Not available on FCXX models.



K

Rotary



Dimensions are shown: Inch (mm)
Specifications and dimensions subject to change