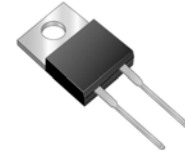


GLASS PASSIVATED SUPER FAST RECTIFIERS

PRODUCT SUMMARY

Reverse Voltage 50 to 600 Volts
Foward Current 8.0 Amperes



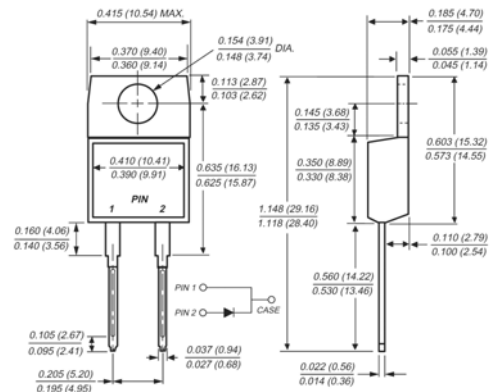
FEATURES

Glass passivated chip
Superfast switching time for hight efficiency
Low reverse leakage current
High surge capacity

MECHANICAL DATA

Case: TO-220AC full molded plastic package
Terminals: Lead solderable per MIL-STD-202, Method 208
Polarity: As marked
Standard packaging: Any
Weight: 0.08 ounces, 2.24 grams

TO-220AC



Pb-free; RoHS-compliant

MAXIMUM RATINGS AND ELECTRICAL CHARACTERISTICS

(Ratings at 25°C ambient temperature unless otherwise specified.)

Parameter	Symbol	MUR805	MUR810	MUR820	MUR840	MUR860	Unit
Maximum repetitive peak reverse voltage	V_{RRM}	50	100	200	400	600	Volts
Maximum RMS voltage	V_{RMS}	35	70	140	280	420	Volts
Maximum DC blocking voltage	V_{DC}	50	100	200	400	600	Volts
Maximum average forward rectified current at $T_C=100^\circ\text{C}$	$I_{F(AV)}$	8.0					Amps
Peak forward surge current 8.3ms single half sine-wave superimposed on rated load (JEDEC Method)	I_{FSM}	125.0					Amps
Maximum instantaneous forward voltage at 8.0A	V_F	1.0			1.3	1.8	Volts
Maximum DC reverse current @ $T_J=25^\circ\text{C}$ at rated DC blocking voltage @ $T_J=125^\circ\text{C}$	I_R			10.0 500			μA
Maximum reverse recovery time $I_F=0.5\text{A}$, $I_R=1.0\text{A}$, $I_{tr}=0.25\text{A}$	t_{rr}	50					nS
Operating junction and storage temperature range	T_J, T_{STG}	-55 to +150					$^\circ\text{C}$

Notes: 1. Pulse test: Pulse width 300 usec, Duty ccle 2%

RATINGS AND CHARACTERISTIC CURVES

($T_A = 25^\circ\text{C}$ unless otherwise noted)

Figure 1
Typical Forward Characteristics

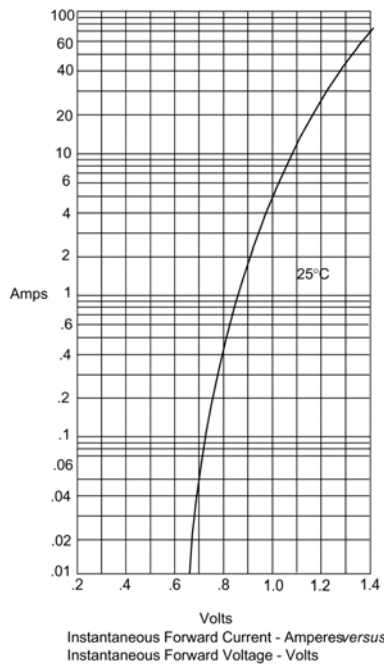


Figure 2
Typical Reverse Characteristics

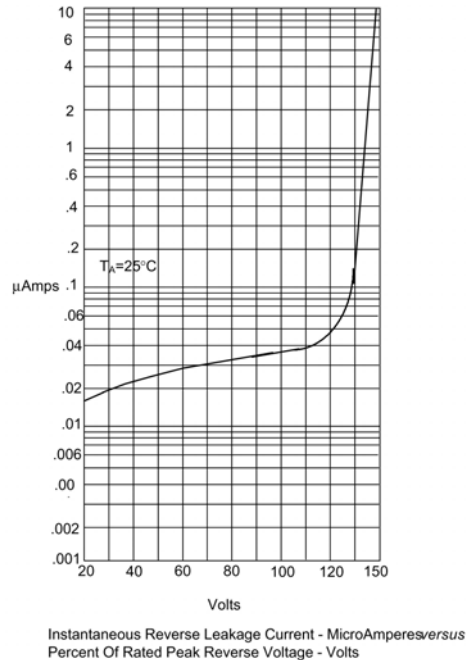


Figure 3
Forward Derating Curve

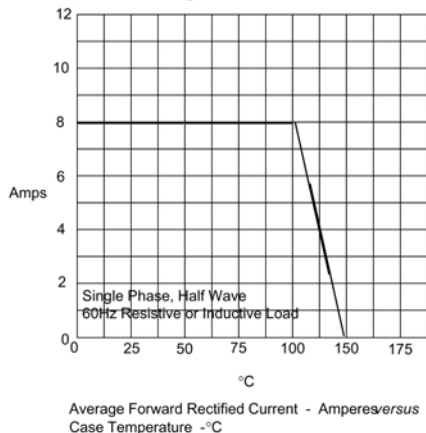
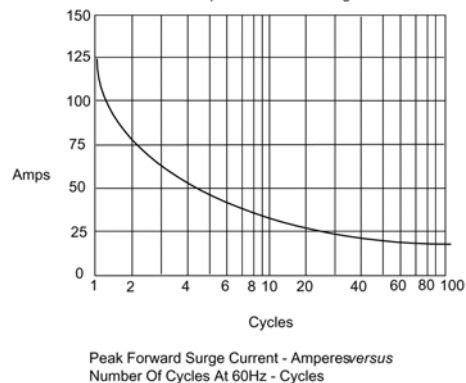


Figure 4
Maximum Non-Repetitive Forward Surge Current



Information furnished by Silicon Standard Corporation is believed to be accurate and reliable. However, Silicon Standard Corporation makes no guarantee or warranty, expressed or implied, as to the reliability, accuracy, timeliness or completeness of such information and assumes no responsibility for its use, or for infringement of any patent or other intellectual property rights of third parties that may result from its use. Silicon Standard reserves the right to make changes as it deems necessary to any products described herein for any reason, including without limitation enhancement in reliability, functionality or design. No license is granted, whether expressly or by implication, in relation to the use of any products described herein or to the use of any information provided herein, under any patent or other intellectual property rights of Silicon Standard Corporation or any third parties.