

Series NDP 90° Solder Dip Plug (1.27mm Pitch)

Internal Connectors

Specifications

Insulation Resistance:	500MΩ min. at 500V DC
Withstanding Voltage:	500V ACrms for 1 minute
Contact Resistance:	35mΩ max. at 10mA
Current Rating:	0.5A
Operating Temp. Range:	-55°C to +85°C
Mating Cycles:	500 insertions
Soldering Temp.:	260°C / 3 sec.

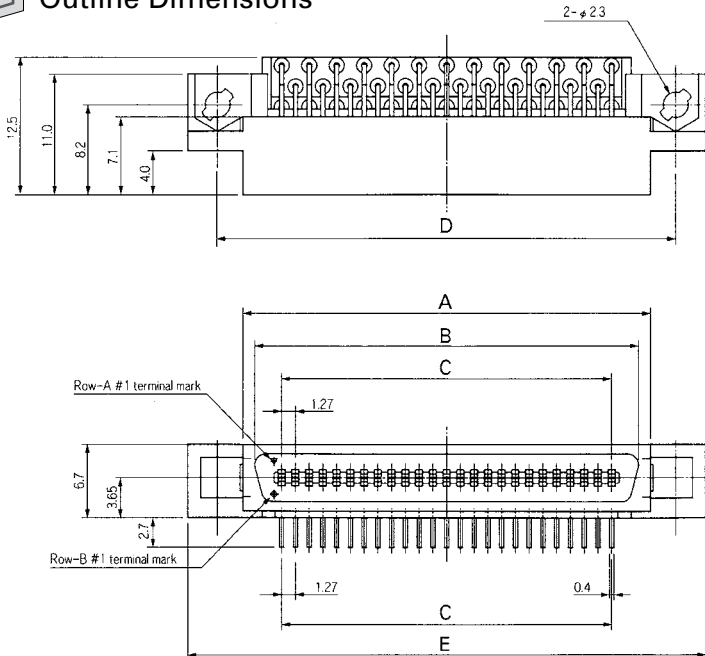
Materials and Finish

Housing:	PPS (glass filled), UL 94V-0 rated
Contacts:	Copper Alloy
Plating:	Mating Face Contacts - Au over Ni
	Solder Terminals - Au over Ni

Features

- Low insertion and extraction forces due to bellows type contacts

Outline Dimensions



Part Number (Details)

NDP 050 - 002 - BF

Series (plug)

No. of Leads

Terminal Type:

2 = Right Angle Solder Dip

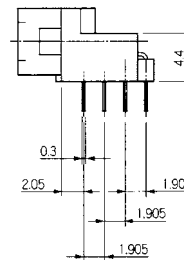
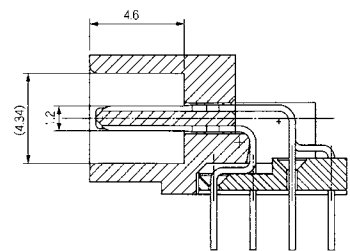
Contact Plating:

Mating Face - Au (0.3μm min.) over Ni

Solder Terminals - Au (0.05μm min.) over Ni



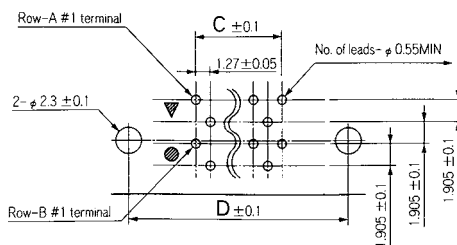
Contact Details



1.27 mm Board-to-Board Connectors

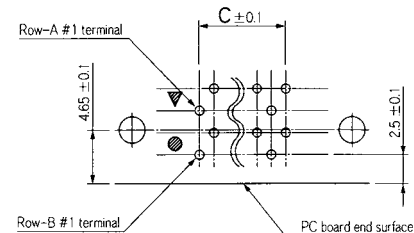
Recommended PCB Layout

For 14, 26, 30 and 50 Leads only



For All Other Leads

Top View



Standard types

Part Number	No. of Leads	A	B	C	D	E
NDP036-002-BF	36	28.75	26.55	21.59	33.43	38.93
NDP068-002-BF	68	49.07	46.87	41.91	53.75	59.25
NDP128-002-BF	128	87.17	84.97	80.01	91.85	97.35

For the following versions below please contact Yamaichi,
minimum order quantity may be required

NDP040-002-BF	40	31.29	29.09	24.13	35.97	41.47
NDP100-002-BF	100	69.39	67.19	62.23	74.04	79.57

Specifications

Insulation Resistance:	500MΩ min. at 500V DC
Withstanding Voltage:	500V ACrms for 1 minute
Contact Resistance:	35mΩ max. at 10mA
Current Rating:	0.5A
Operating Temp. Range:	-55°C to +85°C
Mating Cycles:	500 insertions
Soldering Temp.:	260°C / 5 sec.

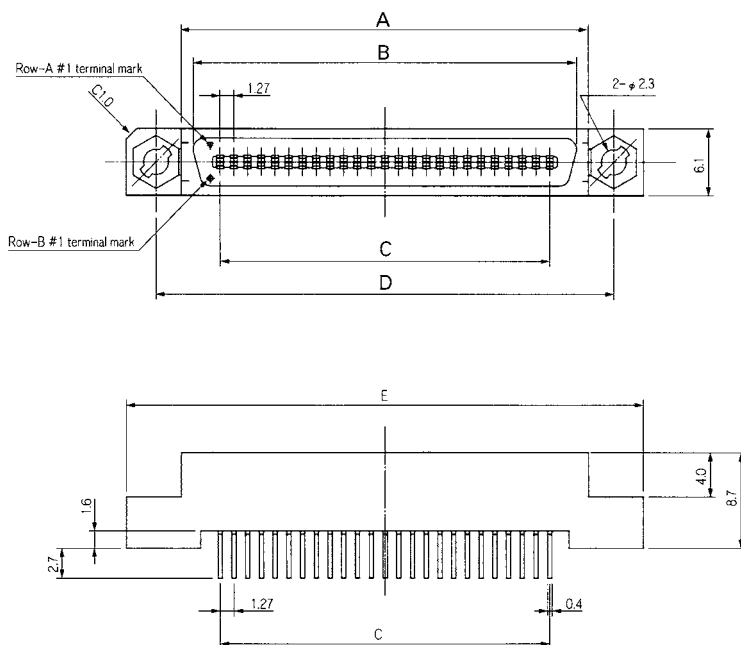
Materials and Finish

Housing:	PPS (glass filled), UL 94V-0 rated
Contacts:	Copper Alloy
Plating:	Mating Face Contacts - Au over Ni Solder Terminals - Au over Ni

Features

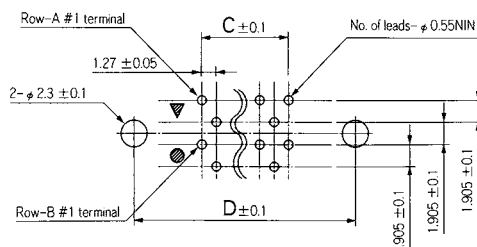
- Low insertion and extraction forces due to bellows type contacts

Outline Dimensions



Recommended PCB Layout

For 50 Leads only



Standard types

Part Number	No. of Leads	A	B	C	D	E
NDP036-004-BF	36	28.75	26.55	21.59	33.43	38.93
NDP050-004-BF	50	37.64	35.44	30.48	42.32	47.82

For the following versions below please contact Yamaichi,
minimum order quantity may be required

NDP068-004-BF	68	49.07	46.87	41.91	53.75	59.25
NDP100-004-BF	100	69.39	67.19	62.23	74.04	79.57
NDP128-004-BF	128	87.17	84.97	80.01	91.85	97.35

Part Number (Details)

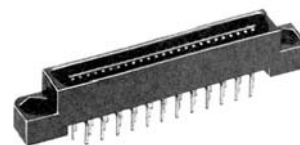
NDP 050 - 004 - BF

Series (plug)

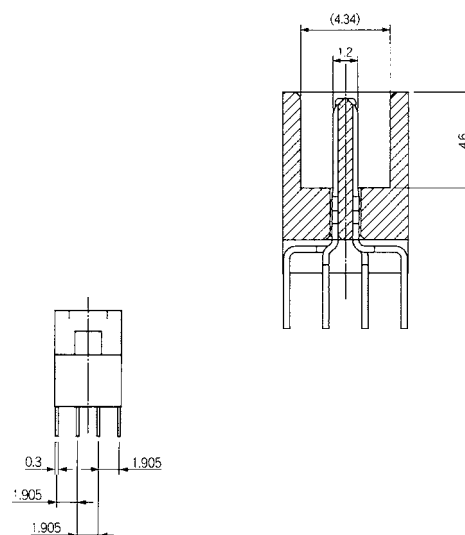
No. of Leads

Terminal Type:
4 = Straight Solder Dip

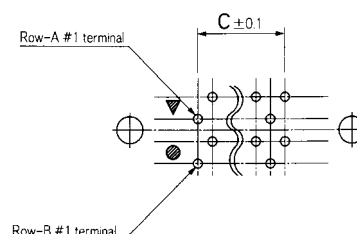
Contact Plating:
Mating Face - Au (0.3μm min.) over Ni
Solder Terminals - Au (0.05μm min.) over Ni



Contact Details



For All Other Leads



Top View