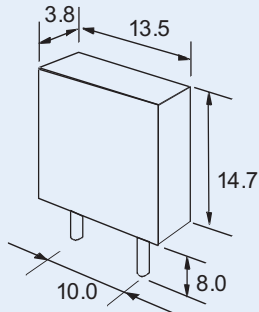


## ZTB SERIES

### ZTB SERIES

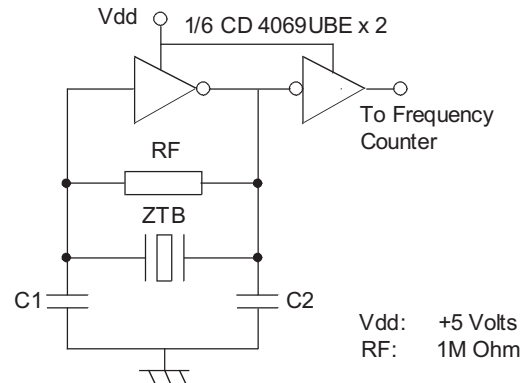
190kHz to 249kHz

#### ZTB Series 190kHz to 249kHz



#### Outline and Dimensions

#### Test Circuit



#### Electrical characteristics

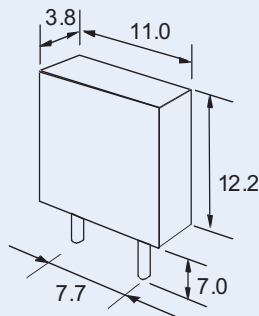
Part Number	Frequency Range (kHz)	Frequency Accuracy at 25°C	Temperature Stability -20° to +80°C	Ageing Stability 10 years	Resonance Resistance ( $\Omega$ ) max.	C <sub>1</sub> (pF)	C <sub>2</sub> (pF)
ZTB ---D	190 to 249	±1.0kHz	±0.3%	±0.5%	20	330pF	470pF

(For ---- insert frequency)

### ZTB SERIES

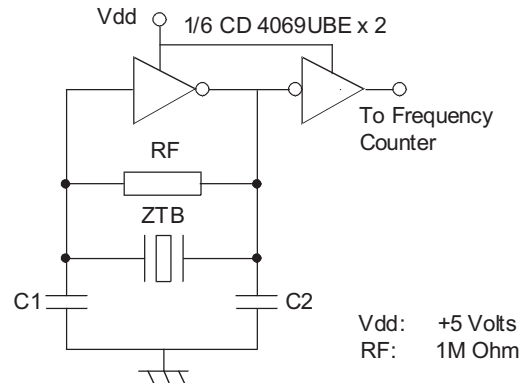
250kHz to 374kHz

#### ZTB Series 250kHz to 374kHz



#### Outline and Dimensions

#### Test Circuit



#### Electrical characteristics

Part Number	Frequency Range (kHz)	Frequency Accuracy at 25°C	Temperature Stability -20° to +80°C	Ageing Stability 10 years	Resonance Resistance ( $\Omega$ ) max.	C <sub>1</sub> (pF)	C <sub>2</sub> (pF)
ZTB ---D	250 to 374	±1.0kHz	±0.3%	±0.5%	20	220pF	470pF

(For ---- insert frequency)