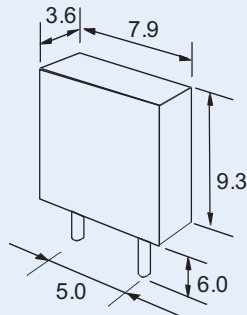


## ZTB SERIES

### ZTB SERIES

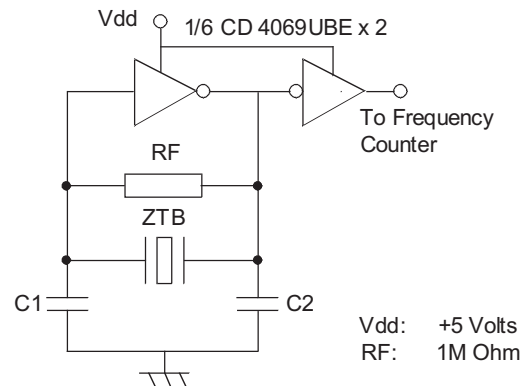
375kHz to 429kHz

#### ZTB Series 375kHz to 429kHz



#### Outline and Dimensions

#### Test Circuit



#### Electrical characteristics

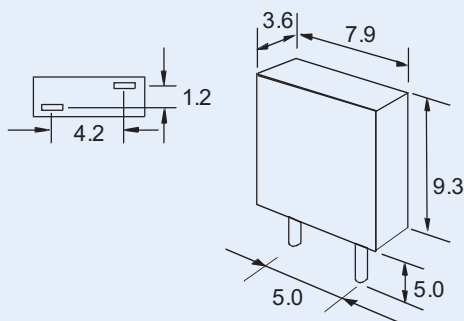
Part Number	Frequency Range (kHz)	Frequency Accuracy at 25°C	Temperature Stability -20° to +80°C	Ageing Stability 10 years	Resonance Resistance (Ω) max.	C <sub>1</sub> (pF)	C <sub>2</sub> (pF)
ZTB ---P	375 to 429	±2.0kHz	±0.3%	±0.5%	20	120pF	470pF

(For ---- insert frequency)

### ZTB SERIES

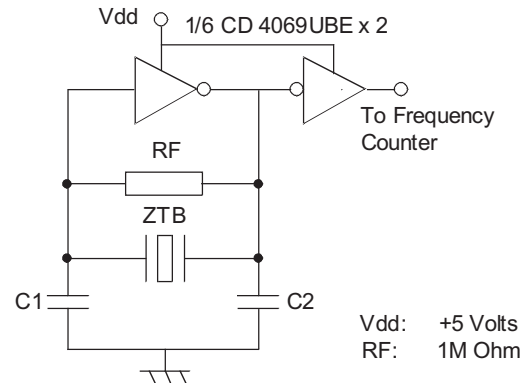
430kHz to 439kHz

#### ZTB Series 430kHz to 439kHz



#### Outline and Dimensions

#### Test Circuit



#### Electrical characteristics

Part Number	Frequency Range (kHz)	Frequency Accuracy at 25°C	Temperature Stability -20° to +80°C	Ageing Stability 10 years	Resonance Resistance (Ω) max.	C <sub>1</sub> (pF)	C <sub>2</sub> (pF)
ZTB ---E	430 to 439	±2.0kHz	±0.3%	±0.5%	20	100pF	100pF

(For ---- insert frequency)