

## Three Phase RFI Power Line Filters

# AYA Series



UL Recognized



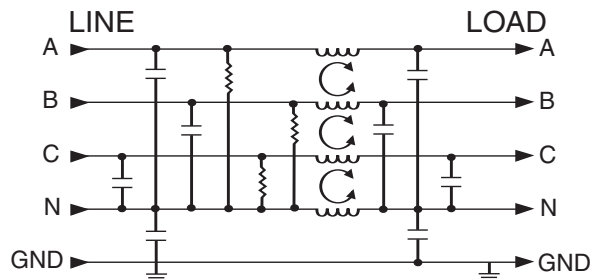
25AYA6A

## AYA Series

The AYA series filters are designed for 3-phase, four-wire, WYE wiring applications. These cost-effective filters help better protect electronic equipment in industrial applications.

The series offers filtering up to 50 amps maximum and is used in 3-phase, industrial applications such as uninterruptible power supplies and industrial control systems. The AYA series is designed to comply with current international standards.

## Electrical Schematic



Resistor location for reference only.

## Specifications

### Maximum leakage current, each line-to-ground

@ 120 VAC 60Hz	1.62mA
@ 250 VAC 50 Hz	2.82mA

### Hipot rating (one minute):

line-to-ground	1500 VAC
line-to-line	1450 VDC

### Operating frequency:

50/60 Hz

### Operating voltage (max.):

440 VAC

### Rated current:

16AYA6-A	16A
25AYA6-A	25A
36AYA6-A	36A
50AYA6-A	50A

### Typical insertion loss in dB:

Line-to-ground in 50 ohm circuit

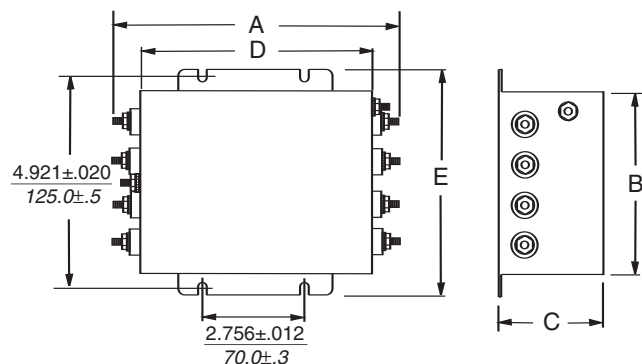
Current Rating	Frequency-MHz							
	.01	.05	.1	.5	1	5	10	30
16A	2	11	19	52	53	70	61	30
25A	2	12	19	46	49	64	54	27
36A	1	10	18	49	54	63	57	32
50A	1	8	14	43	47	63	53	29

Line-to-line in 50 ohm circuit

Current Rating	Frequency-MHz							
	.01	.05	.1	.5	1	5	10	30
16A	14	31	30	82	87	76	77	47
25A	20	36	38	85	81	68	69	33
36A	20	39	36	86	78	65	62	35
50A	20	30	38	85	82	67	66	38

**Three Phase RFI Power Line Filters (Continued)**

# **AYA Series**

**Case Style**

**Terminals:**

16/25: 8-32 (8)  
Torque (Max.): 14 in.lb.

36/50: 1/4-20 (8)  
Torque (Max.): 56 in.lb. ± 2 in.lb.

**Case Dimensions**

Part No.	A (max)	B (max)	C (max)	D (max)	E (max)
16/25	<b>7.91</b> <i>201.0</i>	<b>4.37</b> <i>111.0</i>	<b>1.97</b> <i>50.0</i>	<b>5.94</b> <i>151.0</i>	<b>5.51</b> <i>140.0</i>
36/50	<b>7.91</b> <i>201.0</i>	<b>4.37</b> <i>111.0</i>	<b>2.56</b> <i>65.0</i>	<b>5.94</b> <i>151.0</i>	<b>5.51</b> <i>140.0</i>

**Part Numbers**

16AYA6A  
25AYA6A  
36AYA6A  
50AYA6A