

Specification Status: Released

Maximum Electrical Rating

Operating Voltage: 12Vdc

Interrupt Current: 100A

Chip Size: 5 X 12mm

Leads: Nickel 1/4H
0.125mm nominal thickness

Solder: Lead-free

Tape: None

Marking: None

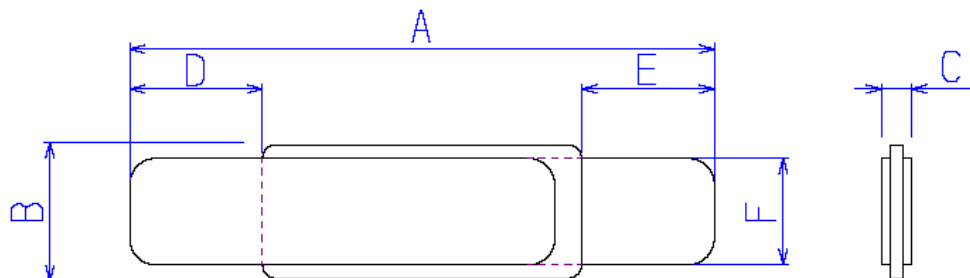


TABLE I. DIMENSIONS:

	A		B		C		D		E		F	
	MIN	MAX	MIN	MAX	MIN	MAX	MIN	MAX	MIN	MAX	MIN	MAX
mm:	20.9	23.1	4.9	5.1	---	0.7	4.1	6.0	4.1	6.0	3.9	4.1
in*:	(0.82)	(0.91)	(0.19)	(0.20)	--	(0.03)	(0.16)	(0.24)	(0.16)	(0.24)	(0.15)	(0.16)

*Rounded off approximation

TABLE II. PERFORMANCE RATINGS: As measured in Mueller Kelvin Clips model BU-75K.

I HOLD	CURRENT TRIP LIMITS								TIME TO TRIP		REFERENCE RESISTANCE		ONE-HOUR POST-TRIP RESISTANCE		TRIPPED-STATE POWER DISSIPATION	
	AMPS AT 0°C		AMPS AT 25°C		AMPS AT 60°C		AMPS AT --°C									
AMPS 25°C HOLD	AMPS AT 0°C HOLD	AMPS AT 0°C TRIP	AMPS AT 25°C HOLD	AMPS AT 25°C TRIP	AMPS AT 60°C HOLD	AMPS AT 60°C TRIP	AMPS AT --°C HOLD	AMPS AT --°C TRIP	SECONDS AT 25°C, 10.0A TYP	SECONDS AT 25°C, 10.0A MAX	OHMS AT 25°C MIN	OHMS AT 25°C MAX	OHMS AT 25°C TYP	OHMS AT 25°C MAX	WATTS AT 25°C, 12V TYP	WATTS AT 25°C, 12V MAX
2.3	3.4	6.6	2.3	5.0	0.9	2.3	---	---	2.4	5	0.012	0.018	0.031	0.036	1.4	2.5

Agency Recognitions:
Reference Documents:
Precedence:
Effectivity:
CAUTION:

UL, TUV, CSA
PS300

This specification takes precedence over documents referenced herein.
Reference documents shall be the issue in effect on the date of invitation for bid.
Operation beyond the rated voltage or current may result in rupture, electrical arcing or flame.

Materials Information:

ROHS Compliant

Directive 2002/95/EC
Compliant

ELV Compliant

Directive 2000/53/EC
Compliant

Pb-Free

