

## FEATURES

- Eight Constant-Current Output Channels
- Output Current Adjusted Through External Resistor
- Constant Output Current Range: 5 mA to 120 mA
- Constant Output Current Invariant to Load Voltage Change
- Open Load, Short Load and Overtemperature Detection
- 256-Step Programmable Global Current Gain
- Excellent Output Current Accuracy:
  - Between Channels:  $< \pm 3\%$  (Max)
  - Between ICs:  $< \pm 6\%$  (Max)
- Fast Response of Output Current
- 30-MHz Clock Frequency
- Schmitt-Trigger Input
- 3.3-V or 5-V Supply Voltage
- Thermal Shutdown for Overtemperature Protection

## APPLICATIONS

- General LED Lighting Applications
- LED Display Systems
- LED Signage
- Automotive LED Lighting
- White Goods
- Gaming Machines/Entertainment

## DESCRIPTION/ORDERING INFORMATION

The TLC5916/TLC5917 is designed for LED displays and LED lighting applications with constant-current control and open-load, shorted-load, and overtemperature detection. The TLC5916/TLC5917 contains an 8-bit shift register and data latches, which convert serial input data into parallel output format. At the output stage, eight regulated current ports are designed to provide uniform and constant current for driving LEDs within a wide range of VF variations. Used in system design for LED display applications, e.g., LED panels, it provides great flexibility and device performance. Users can adjust the output current from 5 mA to 120 mA through an external resistor,  $R_{ext}$ , which gives flexibility in controlling the light intensity of LEDs. The devices are designed for up to 17 V at the output port. The high clock frequency, 30 MHz, also satisfies the system requirements of high-volume data transmission.

The TLC5916/TLC5917 provides a Special Mode in which two functions are included, Error Detection and Current Gain Control. There are two operation modes and three phases: Normal Mode phase, Mode Switching transition phase, and Special Mode phase. The signal on the multiple function pin  $\overline{OE}(ED2)$  is monitored to determine the mode. When an one-clock-wide pulse appears on  $\overline{OE}(ED2)$ , the device enters the Mode Switching phase. At this time, the voltage level on LE(ED1) determines the mode to which the TLC5916/TLC5917 switches.

In the Normal Mode phase, the serial data can be transferred into TLC5916/TLC5917 via the pin SDI, shifted in the shift register, and transferred out via the pin SDO. LE(ED1) can latch the serial data in the shift register to the output latch.  $\overline{OE}(ED2)$  enables the output drivers to sink current.

In the Special Mode phase, the low-voltage-level signal  $\overline{OE}(ED2)$  can enable output channels and detect the status of the output current, to determine if the driving current level is sufficient. The detected Error Status is loaded into the 8-bit shift register and shifted out via the pin SDO, synchronous to the CLK signal. The system controller can read the error status and determine whether or not the LEDs are properly lit.

In the Special Mode phase, the TLC5916/TLC5917 allows users to adjust the output current level by setting a runtime-programmable Configuration Code. The code is sent into the TLC5916/TLC5917 via SDI. The positive pulse of LE(ED1) latches the code in the shift register into a built-in 8-bit configuration latch, instead of the output latch. The code affects the voltage at the terminal R-EXT and controls the output-current regulator. The output current can be finely adjusted by a gain ranging from 1/12 to 127/128 in 256 steps. Therefore, the current skew between ICs can be compensated within less than 1%. This feature is suitable for white balancing in LED color display panels.



Please be aware that an important notice concerning availability, standard warranty, and use in critical applications of Texas Instruments semiconductor products and disclaimers thereto appears at the end of this data sheet.

# TLC5916, TLC5917

## 8-BIT CONSTANT-CURRENT LED SINK DRIVERS

SLVS695A–JUNE 2007–REVISED MARCH 2008



This integrated circuit can be damaged by ESD. Texas Instruments recommends that all integrated circuits be handled with appropriate precautions. Failure to observe proper handling and installation procedures can cause damage.

ESD damage can range from subtle performance degradation to complete device failure. Precision integrated circuits may be more susceptible to damage because very small parametric changes could cause the device not to meet its published specifications.

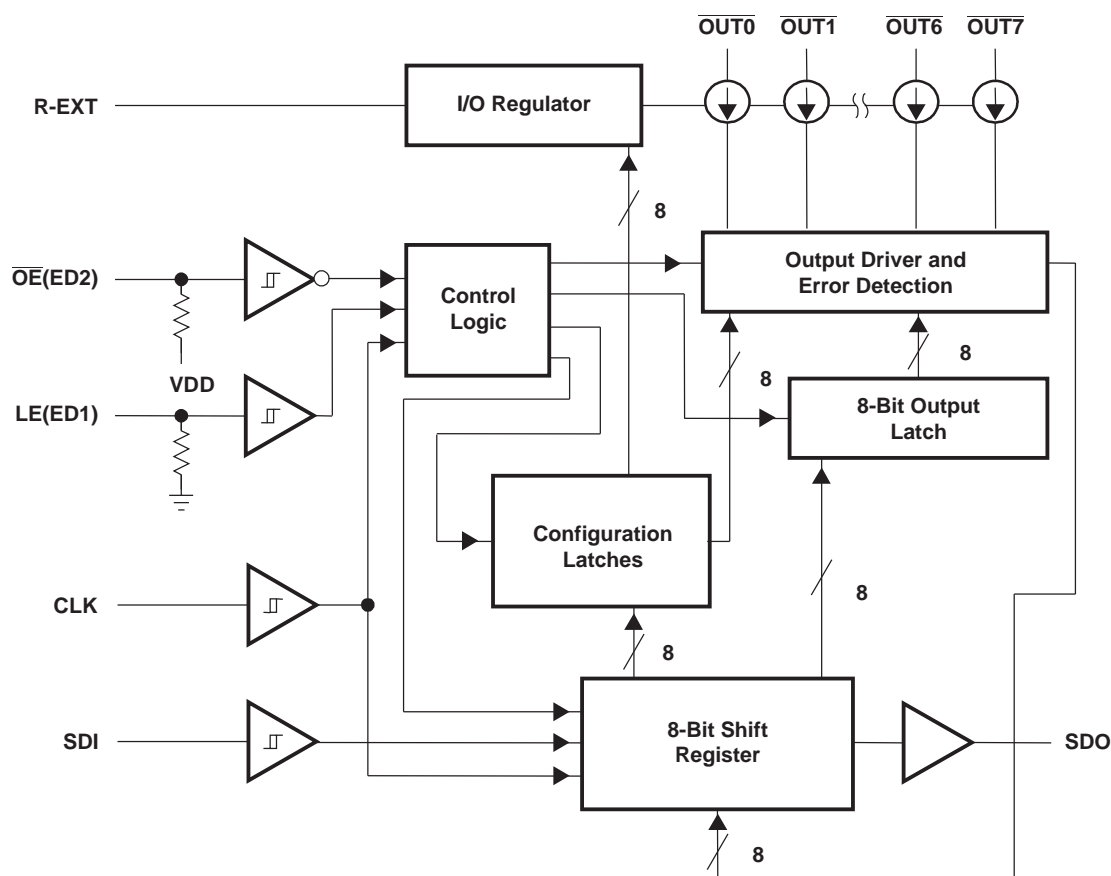
### ORDERING INFORMATION<sup>(1)</sup>

| T <sub>A</sub> | SHORT TO V <sub>LED</sub><br>DETECTION | PACKAGE <sup>(2)</sup> |              | ORDERABLE PART NUMBER | TOP-SIDE MARKING |
|----------------|--|------------------------|--------------|-----------------------|------------------|
| –40°C to 125°C | No                                     | PDIP – N               | Tube of 25   | TLC5916IN             | TLC5916IN        |
|                |  | SOIC – D               | Tube of 40   | TLC5916ID             | TLC5916I         |
|                |  |                        | Reel of 2500 | TLC5916IDR            |                  |
|                |  | TSSOP – PW             | Tube of 90   | TLC5916IPW            | Y5916            |
|                |  |                        | Reel of 2000 | TLC5916IPWR           |                  |
|                | Yes                                    | PDIP – N               | Tube of 25   | TLC5917IN             | TLC5917IN        |
|                |  | SOIC – D               | Tube of 40   | TLC5917ID             | TLC5917I         |
|                |  |                        | Reel of 2500 | TLC5917IDR            |                  |
|                |  | TSSOP – PW             | Tube of 90   | TLC5917IPW            | Y5917            |
|                |  |                        | Reel of 2000 | TLC5917IPWR           |                  |

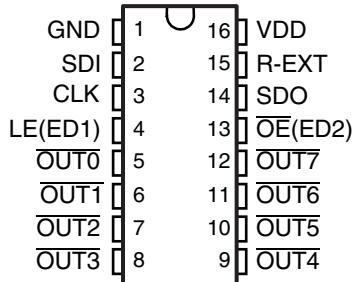
(1) For the most current package and ordering information, see the Package Option Addendum at the end of this document, or see the TI web site at [www.ti.com](http://www.ti.com).

(2) Package drawings, standard packing quantities, thermal data, symbolization, and PCB design guidelines are available at [www.ti.com/sc/package](http://www.ti.com/sc/package).

### BLOCK DIAGRAM



**D, N, OR PW PACKAGE  
(TOP VIEW)**



**Terminal Descriptions**

| TERMINAL NAME                         | DESCRIPTION   |
|---------------------------------------|---|
| CLK                                   | Clock input for data shift on rising edge   |
| GND                                   | Ground for control logic and current sink   |
| LE(ED1)                               | Data strobe input<br>Serial data is transferred to the respective latch when LE(ED1) is high. The data is latched when LE(ED1) goes low. Also, a control signal input for an Error Detection Mode and Current Adjust Mode (see Timing Diagram). LE(ED1) has an internal pulldown.                                       |
| $\overline{OE}(ED2)$                  | Output enable. When $\overline{OE}(ED2)$ is active (low), the output drivers are enabled; when $\overline{OE}(ED2)$ is high, all output drivers are turned OFF (blanked). Also, a control signal input for an Error Detection Mode and Current Adjust Mode (see Figure 1). $\overline{OE}(ED2)$ has an internal pullup. |
| $\overline{OUT0}$ – $\overline{OUT7}$ | Constant-current outputs  |
| R-EXT                                 | Input used to connect an external resistor for setting up all output currents   |
| SDI                                   | Serial-data input to the Shift register   |
| SDO                                   | Serial-data output to the following SDI of next driver IC or to the microcontroller   |
| VDD                                   | Supply voltage  |

**Diagnostic Features**

| DEVICE <sup>(1)</sup> | OVERTEMPERATURE DETECTION | OPEN-LOAD DETECTION | SHORT TO GND DETECTION | SHORT TO $V_{LED}$ DETECTION |
|-----------------------|---------------------------|---------------------|------------------------|------------------------------|
| TLC5916               | X                         | X                   | X                      |                              |
| TLC5917               | X                         | X                   | X                      | X                            |

(1) The device has one single error register for all these conditions (one error bit per channel).

### Timing Diagram

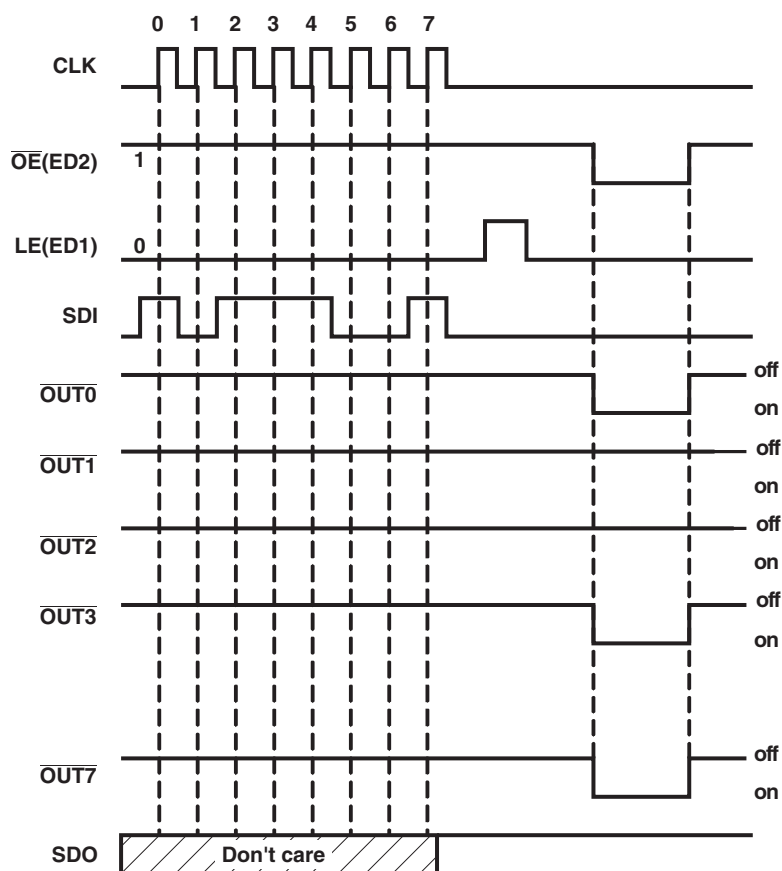


Figure 1. Normal Mode

Truth Table in Normal Mode

| CLK | LE(ED1) | OE(ED2) | SDI    | OUT0...OUT7     | SDO    |
|-----|---------|---------|--------|-----------------|--------|
| ↑   | H       | L       | Dn     | Dn...Dn – 7     | Dn – 7 |
| ↑   | L       | L       | Dn + 1 | No change       | Dn – 6 |
| ↑   | H       | L       | Dn + 2 | Dn + 2...Dn – 5 | Dn – 5 |
| ↓   | X       | L       | Dn + 3 | Dn + 2...Dn – 5 | Dn – 5 |
| ↓   | X       | H       | Dn + 3 | Off             | Dn – 5 |

The signal sequence shown in Figure 2 makes the TLC5916/TLC5917 enter Current Adjust and Error Detection Mode.

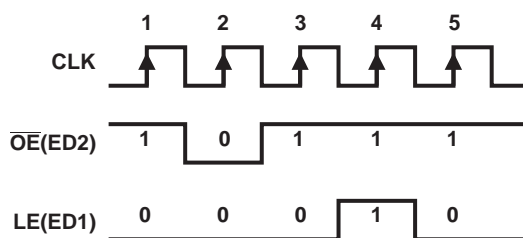


Figure 2. Switching to Special Mode

In the Current Adjust Mode, sending the positive pulse of LE(ED1), the content of the shift register (a current adjust code) is written to the 8-bit configuration latch (see Figure 3).

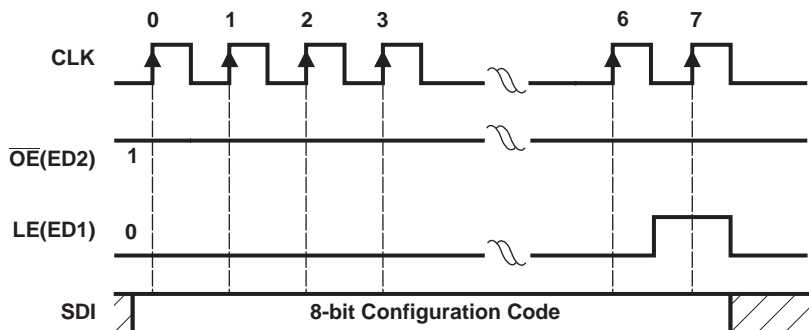


Figure 3. Writing Configuration Code

When the TLC5916/TLC5917 is in the Error Detection Mode, the signal sequence shown in Figure 4 enables a system controller to read error status codes through SDO.

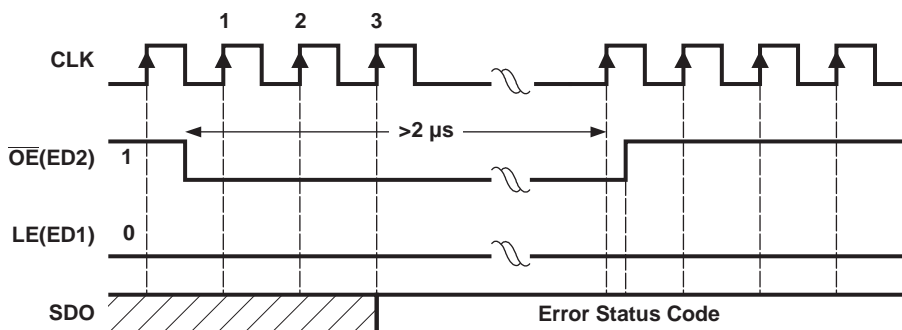


Figure 4. Reading Error Status Code

The signal sequence shown in Figure 5 makes TLC5916/TLC5917 resume the Normal Mode. Switching to Normal Mode resets all internal Error Status registers. OE(ED2) always enables the output port, whether the TLC5916/TLC5917 enters Current Adjust Mode or not.

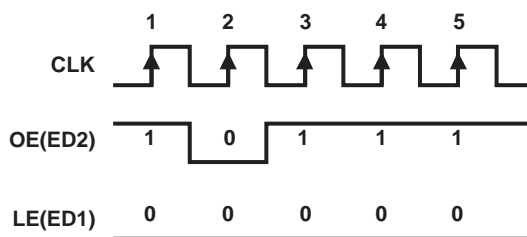


Figure 5. Switching to Normal Mode

# TLC5916, TLC5917

## 8-BIT CONSTANT-CURRENT LED SINK DRIVERS

SLVS695A–JUNE 2007–REVISED MARCH 2008

### Absolute Maximum Ratings

over operating free-air temperature range (unless otherwise noted)

|           |  | MIN                    | MAX            | UNIT |
|-----------|--|------------------------|----------------|------|
| $V_{DD}$  | Supply voltage range                               | 0                      | 7              | V    |
| $V_I$     | Input voltage range                                | –0.4                   | $V_{DD} + 0.4$ | V    |
| $V_O$     | Output voltage range                               | –0.5                   | 20             | V    |
| $f_{clk}$ | Clock frequency                                    |                        | 25             | MHz  |
| $I_{OUT}$ | Output current                                     |                        | 120            | mA   |
| $I_{GND}$ | GND terminal current                               |                        | 960            | mA   |
| $T_A$     | Operating free-air temperature range               | –40                    | 125            | °C   |
| $T_J$     | Operating junction temperature range               | –40                    | 150            | °C   |
| $T_{stg}$ | Storage temperature range                          | –55                    | 150            | °C   |
| ESD       | Electrostatic discharge capability, $V_{(HBMESD)}$ | 100 pF, 1.5 k $\Omega$ | 1.5            | kV   |

### Power Dissipation and Thermal Impedance

|               |   |  | MIN | MAX | UNIT |
|---------------|---|--|-----|-----|------|
| $P_D$         | Power dissipation                       | D package  |     | 1.5 | W    |
|               |   | N package  |     | 1   |      |
|               |   | PW package   |     | 0.9 |      |
| $\theta_{JA}$ | Thermal impedance, junction to free air | Mounted on JEDEC 4-layer board (JESD 51-7), No airflow, $T_A = 25^\circ\text{C}$ , $T_J = 125^\circ\text{C}$ |     |     | °C/W |
|               |   | D package  |     | 103 |      |
|               |   | N package  |     | 148 |      |
|               |   | PW package   |     | 176 |      |
|               |   | Mounted on JEDEC 1-layer board (JESD 51-3), No airflow   |     |     |      |
|               |   | D package  |     | 66  |      |
|               |   | N package  |     | 97  |      |
|               |   | PW package   |     | 112 |      |

## Recommended Operating Conditions

|                 |                                  | CONDITIONS                                   |                        | MIN                   | MAX                   | UNIT |
|-----------------|----------------------------------|--|------------------------|-----------------------|-----------------------|------|
| V <sub>DD</sub> | Supply voltage                   |  |                        | 3                     | 5.5                   | V    |
| V <sub>O</sub>  | Supply voltage to output pins    | $\overline{OUT0}-\overline{OUT7}$            |                        | 17                    |                       | V    |
| I <sub>O</sub>  | Output current                   | DC test circuit                              | V <sub>O</sub> ≥ 0.6 V | 5                     |                       | mA   |
|                 |                                  |  | V <sub>O</sub> ≥ 1 V   | 120                   |                       |      |
| I <sub>OH</sub> | High-level output current source | SDO shorted to GND                           |                        | −1                    |                       | mA   |
| I <sub>OL</sub> | Low-level output current sink    | SDO shorted to V <sub>CC</sub>               |                        | 1                     |                       | mA   |
| V <sub>IH</sub> | High-level input voltage         | CLK, $\overline{OE}$ (ED2), LE(ED1), and SDI |                        | 0.7 × V <sub>DD</sub> | V <sub>DD</sub>       | V    |
| V <sub>IL</sub> | Low-level input voltage          | CLK, $\overline{OE}$ (ED2), LE(ED1), and SDI |                        | 0                     | 0.3 × V <sub>DD</sub> | V    |

## Recommended Timing

$V_{DD} = 3\text{ V to }5.5\text{ V}$  (unless otherwise noted)

|               |                                     | CONDITIONS                            | MIN  | MAX | UNIT |
|---------------|-------------------------------------|---------------------------------------|------|-----|------|
| $t_{w(L)}$    | LE(ED1) pulse duration              | Normal Mode                           | 20   |     | ns   |
| $t_{w(CLK)}$  | CLK pulse duration                  | Normal Mode                           | 20   |     | ns   |
| $t_{w(OE)}$   | $\overline{OE}(ED2)$ pulse duration | Normal Mode, $I_{OUT} < 60\text{ mA}$ | 500  |     | ns   |
|               |                                     | Normal Mode, $I_{OUT} > 60\text{ mA}$ | 700  |     |      |
| $t_{su(D)}$   | Setup time for SDI                  | Normal Mode                           | 3    |     | ns   |
| $t_{h(D)}$    | Hold time for SDI                   | Normal Mode                           | 2    |     | ns   |
| $t_{su(L)}$   | Setup time for LE(ED1)              | Normal Mode                           | 15   |     | ns   |
| $t_{h(L)}$    | Hold time for LE(ED1)               | Normal Mode                           | 15   |     | ns   |
| $t_{w(CLK)}$  | CLK pulse duration                  | Error Detection Mode                  | 20   |     | ns   |
| $t_{w(ED2)}$  | $\overline{OE}(ED2)$ pulse duration | Error Detection Mode                  | 2000 |     | ns   |
| $t_{su(ED1)}$ | Setup time for LE(ED1)              | Error Detection Mode                  | 4    |     | ns   |
| $t_{h(ED1)}$  | Hold time for LE(ED1)               | Error Detection Mode                  | 10   |     | ns   |
| $t_{su(ED2)}$ | Setup time for $\overline{OE}(ED2)$ | Error Detection Mode                  | 6    |     | ns   |
| $t_{h(ED2)}$  | Hold time for $\overline{OE}(ED2)$  | Error Detection Mode                  | 10   |     | ns   |
| $f_{CLK}$     | Clock frequency                     | Cascade operation                     |      | 30  | MHz  |

# TLC5916, TLC5917

## 8-BIT CONSTANT-CURRENT LED SINK DRIVERS

SLVS695A–JUNE 2007–REVISED MARCH 2008

### Electrical Characteristics

$V_{DD} = 3\text{ V}$ ,  $T_J = -40^\circ\text{C}$  to  $125^\circ\text{C}$  (unless otherwise noted)

| PARAMETER                   |  | TEST CONDITIONS  | MIN                 | TYP <sup>(1)</sup>        | MAX                 | UNIT             |
|-----------------------------|--|--|---------------------|---------------------------|---------------------|------------------|
| $V_{DD}$                    | Input voltage  |  | 3                   |                           | 5.5                 | V                |
| $V_O$                       | Supply voltage to the output pins  |  |                     |                           | 17                  | V                |
| $I_O$                       | Output current   | $V_O \geq 0.6\text{ V}$  | 5                   |                           |                     | mA               |
|                             |  | $V_O \geq 1\text{ V}$  |                     |                           | 120                 |                  |
| $I_{OH}$                    | High-level output current, source  |  | –1                  |                           |                     | mA               |
| $I_{OL}$                    | Low-level output current, sink   |  | 1                   |                           |                     | mA               |
| $V_{IH}$                    | High-level input voltage   |  | $0.7 \times V_{DD}$ |                           | $V_{DD}$            | V                |
| $V_{IL}$                    | Low-level input voltage  |  | GND                 |                           | $0.3 \times V_{DD}$ | V                |
| $I_{leak}$                  | Output leakage current   | $V_{OH} = 17\text{ V}$   |                     | $T_J = 25^\circ\text{C}$  | 0.5                 | $\mu\text{A}$    |
|                             |  |  |                     | $T_J = 125^\circ\text{C}$ | 2                   |                  |
| $V_{OH}$                    | High-level output voltage  | SDO, $I_{OL} = -1\text{ mA}$   | $V_{DD} - 0.4$      |                           |                     | V                |
| $V_{OL}$                    | Low-level output voltage   | SDO, $I_{OH} = 1\text{ mA}$  |                     |                           | 0.4                 | V                |
| $I_{O(1)}$                  | Output current 1   | $V_{OUT} = 0.6\text{ V}$ , $R_{ext} = 720\ \Omega$ ,<br>CG = 0.992                                     |                     | 26                        |                     | mA               |
|                             | Output current error, die-die  | $I_{OL} = 26\text{ mA}$ , $V_O = 0.6\text{ V}$ , $R_{ext} = 720\ \Omega$ ,<br>$T_J = 25^\circ\text{C}$ |                     | $\pm 3$                   | $\pm 6$             | %                |
|                             | Output current skew,<br>channel-to-channel                               | $I_{OL} = 26\text{ mA}$ , $V_O = 0.6\text{ V}$ , $R_{ext} = 720\ \Omega$ ,<br>$T_J = 25^\circ\text{C}$ |                     | $\pm 1.5$                 | $\pm 3$             | %                |
| $I_{O(2)}$                  | Output current 2   | $V_O = 0.8\text{ V}$ , $R_{ext} = 360\ \Omega$ , CG = 0.992  |                     | 52                        |                     | mA               |
|                             | Output current error, die-die  | $I_{OL} = 52\text{ mA}$ , $V_O = 0.8\text{ V}$ , $R_{ext} = 360\ \Omega$ ,<br>$T_J = 25^\circ\text{C}$ |                     | $\pm 2$                   | $\pm 6$             | %                |
|                             | Output current skew,<br>channel-to-channel                               | $I_{OL} = 52\text{ mA}$ , $V_O = 0.8\text{ V}$ , $R_{ext} = 360\ \Omega$ ,<br>$T_J = 25^\circ\text{C}$ |                     | $\pm 1.5$                 | $\pm 3$             | %                |
| $I_{OUT\text{ vs }V_{OUT}}$ | Output current vs<br>output voltage regulation                           | $V_O = 1\text{ V to }3\text{ V}$ , $I_O = 26\text{ mA}$  |                     | $\pm 0.1$                 |                     | % / V            |
|                             |  | $V_{DD} = 3.0\text{ V to }5.5\text{ V}$ ,<br>$I_O = 26\text{ mA/120 mA}$                               |                     | $\pm 1$                   |                     |                  |
|                             | Pullup resistance  | $\overline{OE}(ED2)$   |                     | 500                       |                     | k $\Omega$       |
|                             | Pulldown resistance  | LE(ED1)  |                     | 500                       |                     | k $\Omega$       |
| $T_{sd}$                    | Overtemperature shutdown <sup>(2)</sup>                                  |  | 150                 | 175                       | 200                 | $^\circ\text{C}$ |
| $T_{hys}$                   | Restart temperature hysteresis   |  |                     | 15                        |                     | $^\circ\text{C}$ |
| $I_{OUT,Th1}$               | Threshold current for open error<br>detection                            | $I_{OUT,target} = 26\text{ mA}$  |                     | $0.5 \times I_{target}$   |                     | %                |
| $I_{OUT,Th2}$               | Threshold current for open error<br>detection                            | $I_{OUT,target} = 52\text{ mA}$  |                     | $0.5 \times I_{target}$   |                     | %                |
| $I_{OUT,Th3}$               | Threshold current for open error<br>detection                            | $I_{OUT,target} = 104\text{ mA}$   |                     | $0.5 \times I_{target}$   |                     | %                |
| $I_{OUT,Th}$                | Threshold current for open error<br>detection                            | $I_{OUT,target} = 5\text{ mA to }120\text{ mA}$  |                     | $0.5 \times I_{target}$   |                     | %                |
| $V_{OUT,TTh}$               | Trigger threshold voltage for<br>short-error detection<br>(TLC5917 only) | $I_{OUT,target} = 5\text{ mA to }120\text{ mA}$  | 2.5                 | 2.7                       | 3.1                 | V                |
| $V_{OUT,RTh}$               | Return threshold voltage for<br>short-error detection<br>(TLC5917 only)  | $I_{OUT,target} = 5\text{ mA to }120\text{ mA}$  | 2.2                 |                           |                     | V                |
| $I_{DD}$                    | Supply current   | $R_{ext} = \text{Open}$  |                     | 5                         | 10                  | mA               |
|                             |  | $R_{ext} = 720\ \Omega$  |                     | 8                         | 14                  |                  |
|                             |  | $R_{ext} = 360\ \Omega$  |                     | 11                        | 18                  |                  |
|                             |  | $R_{ext} = 180\ \Omega$  |                     | 16                        | 22                  |                  |

- (1) Typical values represent the likely parametric nominal values determined at the time of characterization. Typical values depend on the application and configuration and may vary over time. Typical values are not ensured on production material.
- (2) Specified by design.



## Electrical Characteristics

$V_{DD} = 5.5\text{ V}$ ,  $T_J = -40^\circ\text{C}$  to  $125^\circ\text{C}$  (unless otherwise noted)

| PARAMETER                   |  | TEST CONDITIONS  | MIN                 | TYP <sup>(1)</sup>        | MAX                 | UNIT             |
|-----------------------------|--|--|---------------------|---------------------------|---------------------|------------------|
| $V_{DD}$                    | Input voltage  |  | 3                   |                           | 5.5                 | V                |
| $V_O$                       | Supply voltage to the output pins  |  |                     |                           | 17                  | V                |
| $I_O$                       | Output current   | $V_O \geq 0.6\text{ V}$  | 5                   |                           |                     | mA               |
|                             |  | $V_O \geq 1\text{ V}$  |                     |                           | 120                 |                  |
| $I_{OH}$                    | High-level output current, source  |  | –1                  |                           |                     | mA               |
| $I_{OL}$                    | Low-level output current, sink   |  | 1                   |                           |                     | mA               |
| $V_{IH}$                    | High-level input voltage   |  | $0.7 \times V_{DD}$ |                           | $V_{DD}$            | V                |
| $V_{IL}$                    | Low-level input voltage  |  | GND                 |                           | $0.3 \times V_{DD}$ | V                |
| $I_{leak}$                  | Output leakage current   | $V_{OH} = 17\text{ V}$   |                     | $T_J = 25^\circ\text{C}$  | 0.5                 | $\mu\text{A}$    |
|                             |  |  |                     | $T_J = 125^\circ\text{C}$ | 2                   |                  |
| $V_{OH}$                    | High-level output voltage  | SDO, $I_{OL} = -1\text{ mA}$   | $V_{DD} - 0.4$      |                           |                     | V                |
| $V_{OL}$                    | Low-level output voltage   | SDO, $I_{OH} = 1\text{ mA}$  |                     |                           | 0.4                 | V                |
| $I_{O(1)}$                  | Output current 1   | $V_{OUT} = 0.6\text{ V}$ , $R_{ext} = 720\ \Omega$ ,<br>CG = 0.992                                     |                     | 26                        |                     | mA               |
|                             | Output current error, die-die  | $I_{OL} = 26\text{ mA}$ , $V_O = 0.6\text{ V}$ , $R_{ext} = 720\ \Omega$ ,<br>$T_J = 25^\circ\text{C}$ |                     | $\pm 3$                   | $\pm 6$             | %                |
|                             | Output current skew,<br>channel-to-channel                               | $I_{OL} = 26\text{ mA}$ , $V_O = 0.6\text{ V}$ , $R_{ext} = 720\ \Omega$ ,<br>$T_J = 25^\circ\text{C}$ |                     | $\pm 1.5$                 | $\pm 3$             | %                |
| $I_{O(2)}$                  | Output current 2   | $V_O = 0.8\text{ V}$ , $R_{ext} = 360\ \Omega$ , CG = 0.992  |                     | 52                        |                     | mA               |
|                             | Output current error, die-die  | $I_{OL} = 52\text{ mA}$ , $V_O = 0.8\text{ V}$ , $R_{ext} = 360\ \Omega$ ,<br>$T_J = 25^\circ\text{C}$ |                     | $\pm 2$                   | $\pm 6$             | %                |
|                             | Output current skew,<br>channel-to-channel                               | $I_{OL} = 52\text{ mA}$ , $V_O = 0.8\text{ V}$ , $R_{ext} = 360\ \Omega$ ,<br>$T_J = 25^\circ\text{C}$ |                     | $\pm 1.5$                 | $\pm 3$             | %                |
| $I_{OUT\text{ vs }V_{OUT}}$ | Output current vs<br>output voltage regulation                           | $V_O = 1\text{ V to }3\text{ V}$ , $I_O = 26\text{ mA}$  |                     | $\pm 0.1$                 |                     | % / V            |
|                             |  | $V_{DD} = 3.0\text{ V to }5.5\text{ V}$ ,<br>$I_O = 26\text{ mA}/120\text{ mA}$                        |                     | $\pm 1$                   |                     |                  |
|                             | Pullup resistance  | $\overline{OE}(ED2)$ ,   |                     | 500                       |                     | k $\Omega$       |
|                             | Pulldown resistance  | LE(ED1),   |                     | 500                       |                     | k $\Omega$       |
| $T_{sd}$                    | Overtemperature shutdown <sup>(2)</sup>                                  |  | 150                 | 175                       | 200                 | $^\circ\text{C}$ |
| $T_{hys}$                   | Restart temperature hysteresis   |  |                     | 15                        |                     | $^\circ\text{C}$ |
| $I_{OUT,Th1}$               | Threshold current for open error<br>detection                            | $I_{OUT,target} = 26\text{ mA}$  |                     | $0.5 \times I_{target}$   |                     | %                |
| $I_{OUT,Th2}$               | Threshold current for open error<br>detection                            | $I_{OUT,target} = 52\text{ mA}$  |                     | $0.5 \times I_{target}$   |                     | %                |
| $I_{OUT,Th3}$               | Threshold current for open error<br>detection                            | $I_{OUT,target} = 104\text{ mA}$   |                     | $0.5 \times I_{target}$   |                     | %                |
| $I_{OUT,Th}$                | Threshold current for open error<br>detection                            | $I_{OUT,target} = 5\text{ mA to }120\text{ mA}$  |                     | $0.5 \times I_{target}$   |                     | %                |
| $V_{OUT,TTh}$               | Trigger threshold voltage for<br>short-error detection<br>(TLC5917 only) | $I_{OUT,target} = 5\text{ mA to }120\text{ mA}$  | 2.5                 | 2.7                       | 3.1                 | V                |
| $V_{OUT,RTh}$               | Return threshold voltage for<br>short-error detection<br>(TLC5917 only)  | $I_{OUT,target} = 5\text{ mA to }120\text{ mA}$  | 2.2                 |                           |                     | V                |
| $I_{DD}$                    | Supply current   | $R_{ext} = \text{Open}$  |                     | 6                         | 10                  | mA               |
|                             |  | $R_{ext} = 720\ \Omega$  |                     | 11                        | 14                  |                  |
|                             |  | $R_{ext} = 360\ \Omega$  |                     | 13                        | 18                  |                  |
|                             |  | $R_{ext} = 180\ \Omega$  |                     | 19                        | 24                  |                  |

- (1) Typical values represent the likely parametric nominal values determined at the time of characterization. Typical values depend on the application and configuration and may vary over time. Typical values are not ensured on production material.
- (2) Specified by design.

# TLC5916, TLC5917

## 8-BIT CONSTANT-CURRENT LED SINK DRIVERS

SLVS695A–JUNE 2007–REVISED MARCH 2008

### Switching Characteristics

$V_{DD} = 3\text{ V}$ ,  $T_J = -40^\circ\text{C}$  to  $125^\circ\text{C}$  (unless otherwise noted)

| PARAMETER  | TEST CONDITIONS  | MIN | TYP <sup>(1)</sup> | MAX | UNIT          |
|--|--|-----|--------------------|-----|---------------|
| $t_{PLH1}$ Low-to-high propagation delay time, CLK to $\overline{OUTn}$                  | $V_{IH} = V_{DD}$ , $V_{IL} = \text{GND}$ ,<br>$R_{ext} = 360\ \Omega$ , $V_L = 4\text{ V}$ ,<br>$R_L = 44\ \Omega$ , $C_L = 10\text{ pF}$ ,<br>$CG = 0.992$ | 40  | 65                 | 95  | ns            |
| $t_{PLH2}$ Low-to-high propagation delay time, LE(ED1) to $\overline{OUTn}$              |  | 40  | 65                 | 95  | ns            |
| $t_{PLH3}$ Low-to-high propagation delay time, $\overline{OE}(ED2)$ to $\overline{OUTn}$ |  | 40  | 65                 | 95  | ns            |
| $t_{PLH4}$ Low-to-high propagation delay time, CLK to SDO                                |  | 12  | 20                 | 30  | ns            |
| $t_{PHL1}$ High-to-low propagation delay time, CLK to $\overline{OUTn}$                  |  |     | 300                | 365 | ns            |
| $t_{PHL2}$ High-to-low propagation delay time, LE(ED1) to $\overline{OUTn}$              |  |     | 300                | 365 | ns            |
| $t_{PHL3}$ High-to-low propagation delay time, $\overline{OE}(ED2)$ to $\overline{OUTn}$ |  |     | 300                | 365 | ns            |
| $t_{PHL4}$ High-to-low propagation delay time, CLK to SDO                                |  | 12  | 20                 | 30  | ns            |
| $t_{w(CLK)}$ Pulse duration, CLK   |  | 20  |                    |     | ns            |
| $t_{w(L)}$ Pulse duration, LE(ED1)   |  | 20  |                    |     | ns            |
| $t_{w(OE)}$ Pulse duration, $\overline{OE}(ED2)$   |  | 500 |                    |     | ns            |
| $t_{w(ED2)}$ Pulse duration, $\overline{OE}(ED2)$ in Error Detection Mode                |  | 2   |                    |     | $\mu\text{s}$ |
| $t_{h(ED1,ED2)}$ Hold time, LE(ED1) and $\overline{OE}(ED2)$                             |  | 10  |                    |     | ns            |
| $t_{h(D)}$ Hold time, SDI  |  | 2   |                    |     | ns            |
| $t_{su(D,ED1)}$ Setup time, SDI, LE(ED1)   |  | 3   |                    |     | ns            |
| $t_{su(ED2)}$ Setup time, $\overline{OE}(ED2)$   |  | 8.5 |                    |     | ns            |
| $t_{h(L)}$ Hold time, LE(ED1), Normal Mode   |  | 15  |                    |     | ns            |
| $t_{su(L)}$ Setup time, LE(ED1), Normal Mode   |  | 15  |                    |     | ns            |
| $t_r$ Rise time, CLK <sup>(2)</sup>  |  |     |                    | 500 | ns            |
| $t_f$ Fall time, CLK <sup>(2)</sup>  |  |     |                    | 500 | ns            |
| $t_{or}$ Rise time, outputs (off)  | Cascade operation  | 40  | 85                 | 105 | ns            |
| $t_{or}$ Rise time, outputs (off), $T_J = 25^\circ\text{C}$                              |  |     | 83                 | 100 | ns            |
| $t_{of}$ Rise time, outputs (on)   |  | 100 | 280                | 370 | ns            |
| $t_{of}$ Rise time, outputs (on), $T_J = 25^\circ\text{C}$                               |  |     | 170                | 225 | ns            |
| $f_{CLK}$ Clock frequency  | Cascade operation  |     |                    | 30  | MHz           |

- (1) Typical values represent the likely parametric nominal values determined at the time of characterization. Typical values depend on the application and configuration and may vary over time. Typical values are not ensured on production material.
- (2) If the devices are connected in cascade and  $t_r$  or  $t_f$  is large, it may be critical to achieve the timing required for data transfer between two cascaded devices.

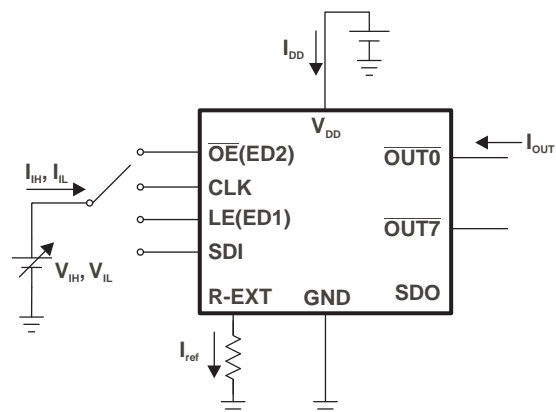
## Switching Characteristics

$V_{DD} = 5.5\text{ V}$ ,  $T_J = -40^\circ\text{C}$  to  $125^\circ\text{C}$  (unless otherwise noted)

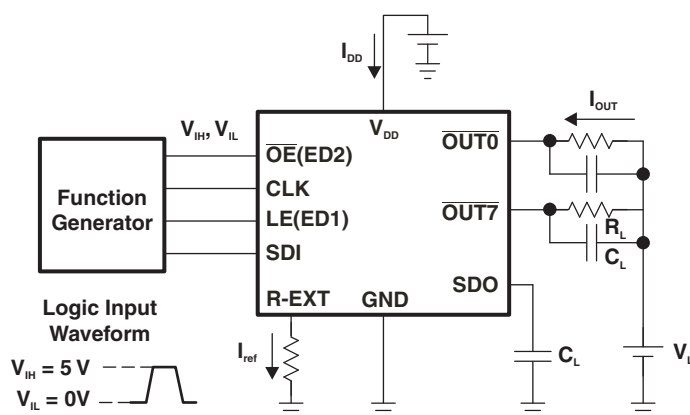
| PARAMETER           |   | TEST CONDITIONS  | MIN | TYP <sup>(1)</sup> | MAX | UNIT          |
|---------------------|---|--|-----|--------------------|-----|---------------|
| $t_{PLH1}$          | Low-to-high propagation delay time, CLK to $\overline{OUTn}$                  | $V_{IH} = V_{DD}$ , $V_{IL} = \text{GND}$ ,<br>$R_{ext} = 360\ \Omega$ , $V_L = 4\text{ V}$ ,<br>$R_L = 44\ \Omega$ , $C_L = 10\text{ pF}$ ,<br>$CG = 0.992$ | 40  | 65                 | 95  | ns            |
| $t_{PLH2}$          | Low-to-high propagation delay time, LE(ED1) to $\overline{OUTn}$              |  | 40  | 65                 | 95  | ns            |
| $t_{PLH3}$          | Low-to-high propagation delay time, $\overline{OE}(ED2)$ to $\overline{OUTn}$ |  | 40  | 65                 | 95  | ns            |
| $t_{PLH4}$          | Low-to-high propagation delay time, CLK to SDO                                |  | 8   | 20                 | 30  | ns            |
| $t_{PHL1}$          | High-to-low propagation delay time, CLK to $\overline{OUTn}$                  |  |     | 300                | 365 | ns            |
| $t_{PHL2}$          | High-to-low propagation delay time, LE(ED1) to $\overline{OUTn}$              |  |     | 300                | 365 | ns            |
| $t_{PHL3}$          | High-to-low propagation delay time, $\overline{OE}(ED2)$ to $\overline{OUTn}$ |  |     | 300                | 365 | ns            |
| $t_{PHL4}$          | High-to-low propagation delay time, CLK to SDO                                |  | 8   | 20                 | 30  | ns            |
| $t_{w(\text{CLK})}$ | Pulse duration, CLK   |  | 20  |                    |     | ns            |
| $t_{w(L)}$          | Pulse duration, LE(ED1)   |  | 20  |                    |     | ns            |
| $t_{w(OE)}$         | Pulse duration, $\overline{OE}(ED2)$  |  | 500 |                    |     | ns            |
| $t_{w(ED2)}$        | Pulse duration, $\overline{OE}(ED2)$ in Error Detection Mode                  |  | 2   |                    |     | $\mu\text{s}$ |
| $t_{h(D,ED1,ED2)}$  | Hold time, SDI, LE(ED1), and $\overline{OE}(ED2)$                             |  | 10  |                    |     | ns            |
| $t_{h(D)}$          | Hold time, SDI  |  | 2   |                    |     | ns            |
| $t_{su(D,ED1)}$     | Setup time, SDI, LE(ED1)  |  | 3   |                    |     | ns            |
| $t_{su(ED2)}$       | Setup time, $\overline{OE}(ED2)$  |  | 8.5 |                    |     | ns            |
| $t_{h(L)}$          | Hold time, LE(ED1), Normal Mode   |  | 15  |                    |     | ns            |
| $t_{su(L)}$         | Setup time, LE(ED1), Normal Mode  |  | 15  |                    |     | ns            |
| $t_r$               | Rise time, CLK <sup>(2)</sup>   |  |     |                    | 500 | ns            |
| $t_f$               | Fall time, CLK <sup>(2)</sup>   |  |     |                    | 500 | ns            |
| $t_{or}$            | Rise time, outputs (off)  |  | 40  | 85                 | 105 | ns            |
| $t_{or}$            | Rise time, outputs (off), $T_J = 25^\circ\text{C}$                            |  |     | 83                 | 100 | ns            |
| $t_{of}$            | Rise time, outputs (on)   |  | 100 | 280                | 370 | ns            |
| $t_{of}$            | Rise time, outputs (on), $T_J = 25^\circ\text{C}$                             |  |     | 170                | 225 | ns            |
| $f_{\text{CLK}}$    | Clock frequency   | Cascade operation  |     |                    | 30  | MHz           |

- (1) Typical values represent the likely parametric nominal values determined at the time of characterization. Typical values depend on the application and configuration and may vary over time. Typical values are not ensured on production material.
- (2) If the devices are connected in cascade and  $t_r$  or  $t_f$  is large, it may be critical to achieve the timing required for data transfer between two cascaded devices.

## PARAMETER MEASUREMENT INFORMATION



**Figure 6. Test Circuit for Electrical Characteristics**



**Figure 7. Test Circuit for Switching Characteristics**

PARAMETER MEASUREMENT INFORMATION (continued)

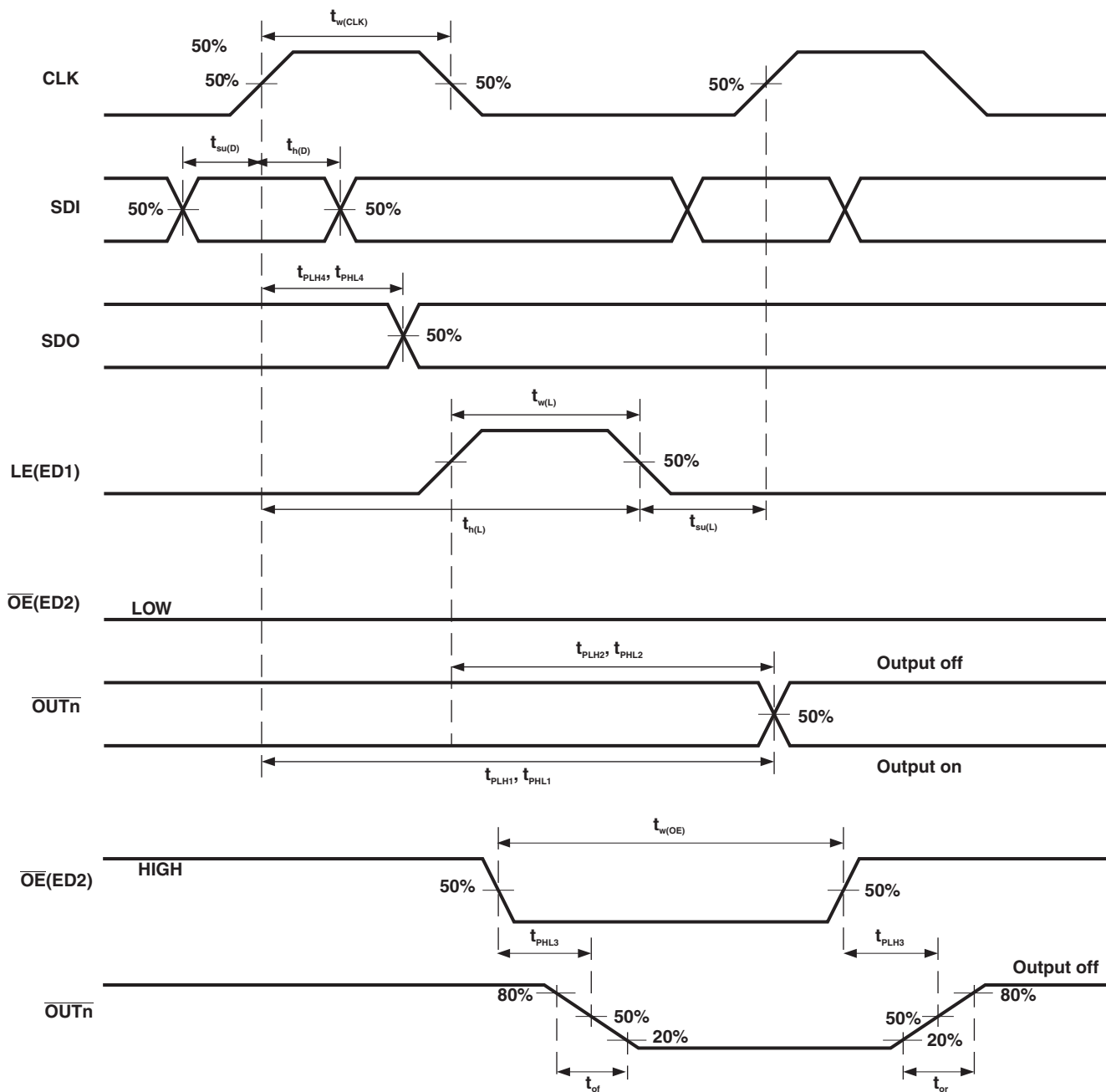
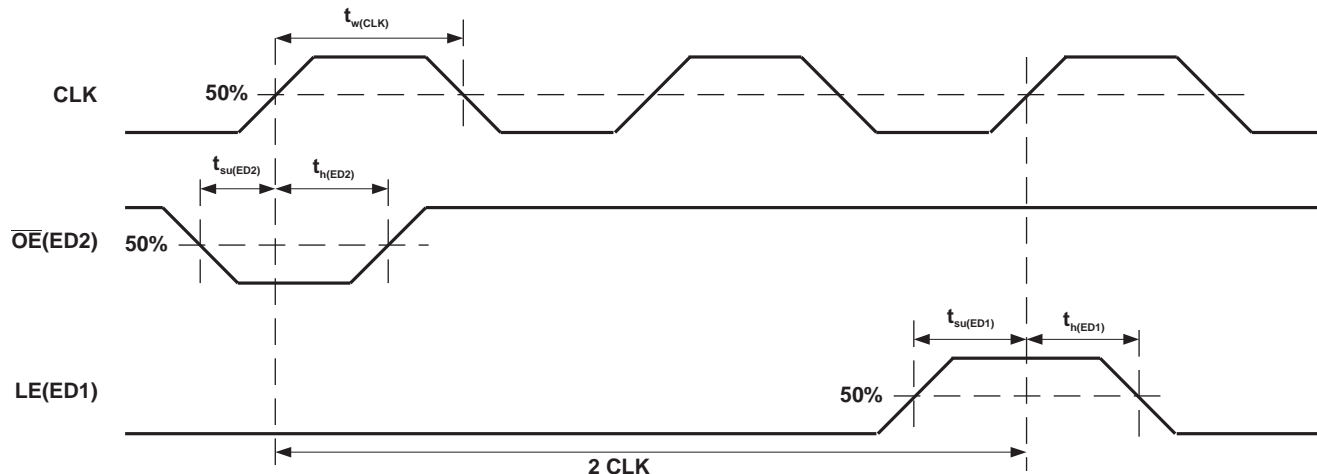
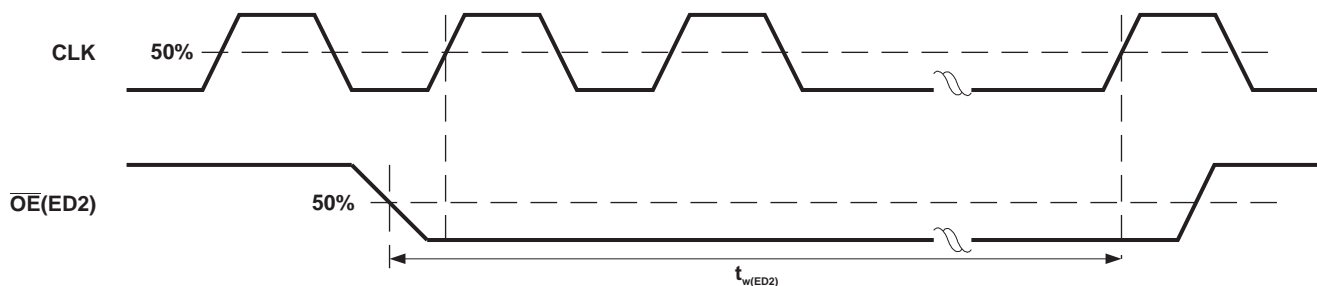


Figure 8. Normal Mode Timing Waveforms

**PARAMETER MEASUREMENT INFORMATION (continued)**



**Figure 9. Switching to Special Mode Timing Waveforms**



**Figure 10. Reading Error Status Code Timing Waveforms**

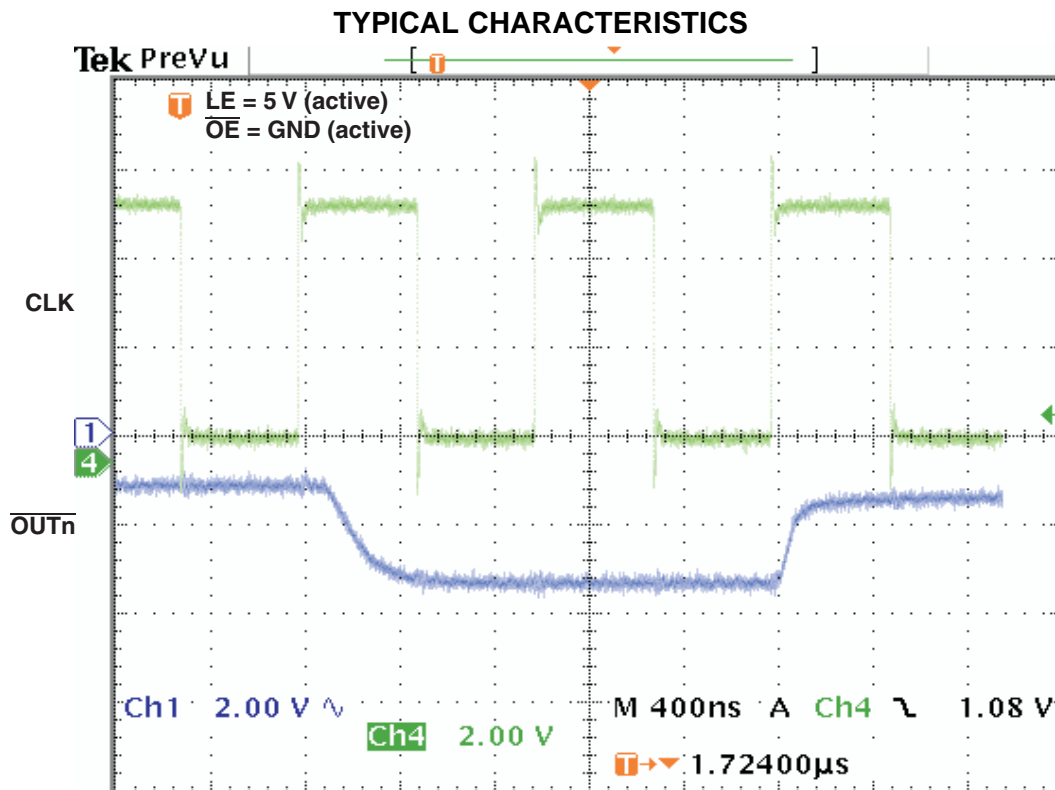


Figure 11. Response Time, CLK to  $\overline{\text{OUTn}}$

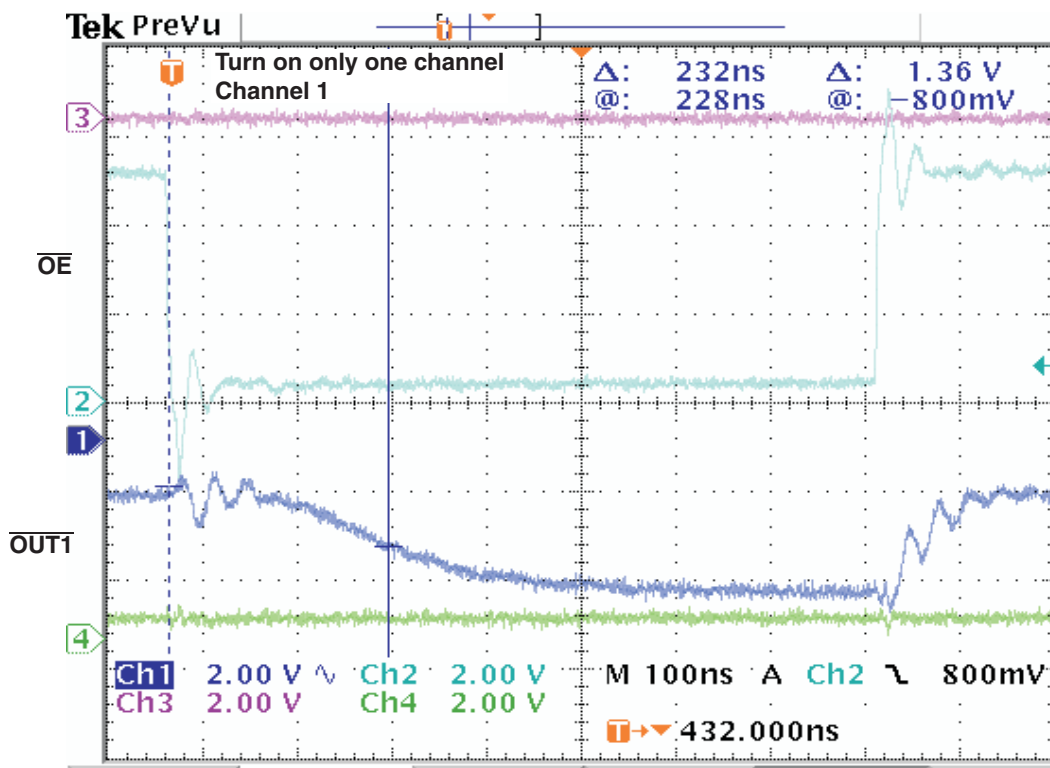


Figure 12. Response Time,  $\overline{\text{OE}}$  to  $\overline{\text{OUT1}}$

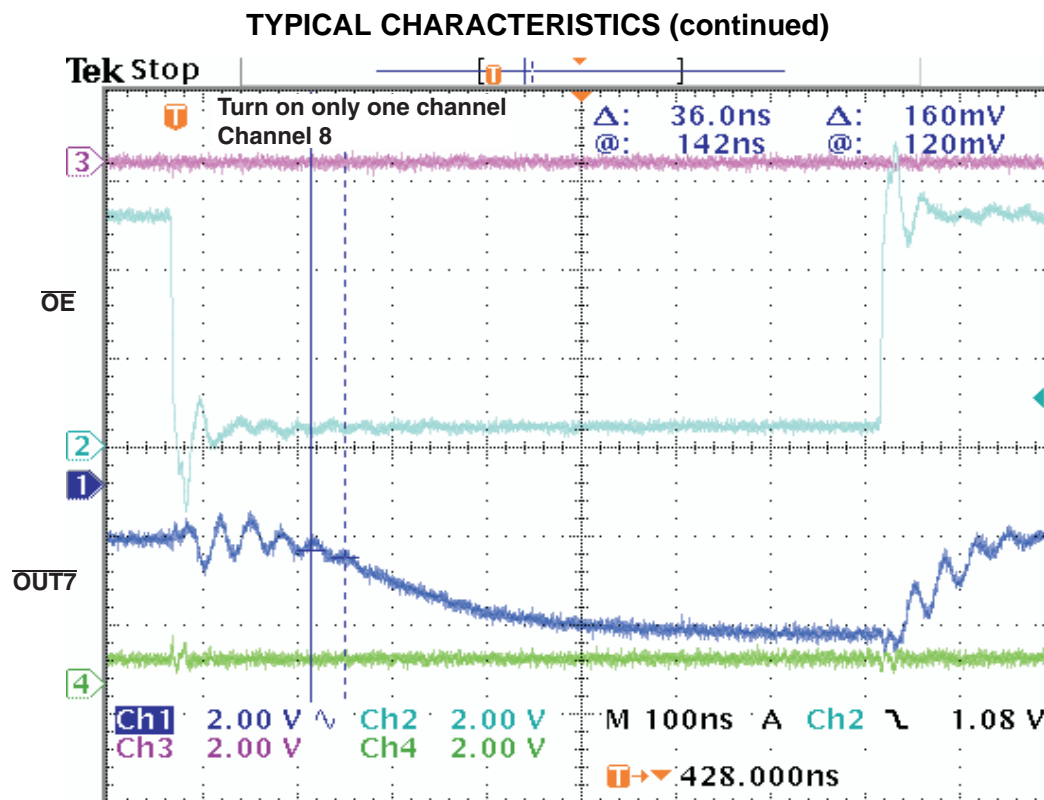


Figure 13. Response Time, OE to OUT7



## APPLICATION INFORMATION

### Operating Principles

#### Constant Current

In LED display applications, TLC5916/TLC5917 provides nearly no current variations from channel to channel and from IC to IC. While  $I_{OUT} \leq 100$  mA, the maximum current skew between channels is less than  $\pm 3\%$  and between ICs is less than  $\pm 6\%$ .

#### Adjusting Output Current

TLC5916/TLC5917 scales up the reference current,  $I_{ref}$ , set by the external resistor  $R_{ext}$  to sink a current,  $I_{out}$ , at each output port. Users can follow the below formulas to calculate the target output current  $I_{OUT,target}$  in the saturation region:

$$V_{R-EXT} = 1.26 \text{ V} \times VG$$

$$I_{ref} = V_{R-EXT}/R_{ext}, \text{ if another end of the external resistor } R_{ext} \text{ is connected to ground}$$

$$I_{OUT,target} = I_{ref} \times 15 \times 3^{CM-1}$$

Where  $R_{ext}$  is the resistance of the external resistor connected to the R-EXT terminal, and  $V_{R-EXT}$  is the voltage of R-EXT, which is controlled by the programmable voltage gain (VG), which is defined by the Configuration Code. The Current Multiplier (CM) determines that the ratio  $I_{OUT,target}/I_{ref}$  is 15 or 5. After power on, the default value of VG is  $127/128 = 0.992$ , and the default value of CM is 1, so that the ratio  $I_{OUT,target}/I_{ref} = 15$ . Based on the default VG and CM:

$$V_{R-EXT} = 1.26 \text{ V} \times 127/128 = 1.25 \text{ V}$$

$$I_{OUT,target} = (1.25 \text{ V}/R_{ext}) \times 15$$

Therefore, the default current is approximately 52 mA at 360  $\Omega$  and 26 mA at 720  $\Omega$ . The default relationship after power on between  $I_{OUT,target}$  and  $R_{ext}$  is shown in Figure 14.

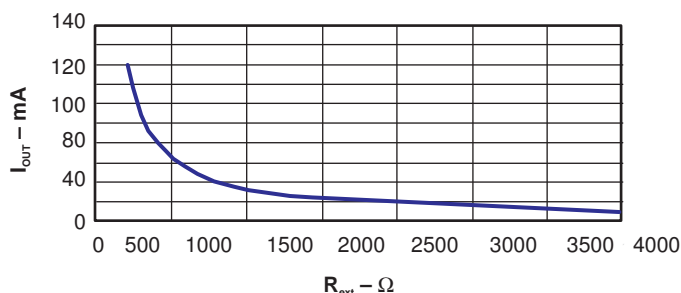


Figure 14. Default Relationship Curve Between  $I_{OUT,target}$  and  $R_{ext}$  After Power Up

# TLC5916, TLC5917

## 8-BIT CONSTANT-CURRENT LED SINK DRIVERS

SLVS695A–JUNE 2007–REVISED MARCH 2008

### Operation Phases

#### Operation Mode Switching

To switch between its two modes, TLC5916/TLC5917 monitors the signal  $\overline{OE}(ED2)$ . When an one-clock-wide pulse of  $\overline{OE}(ED2)$  appears, TLC5916/TLC5917 enters the two-clock-period transition phase, the Mode Switching phase. After power on, the default operation mode is the Normal Mode (see Figure 15).

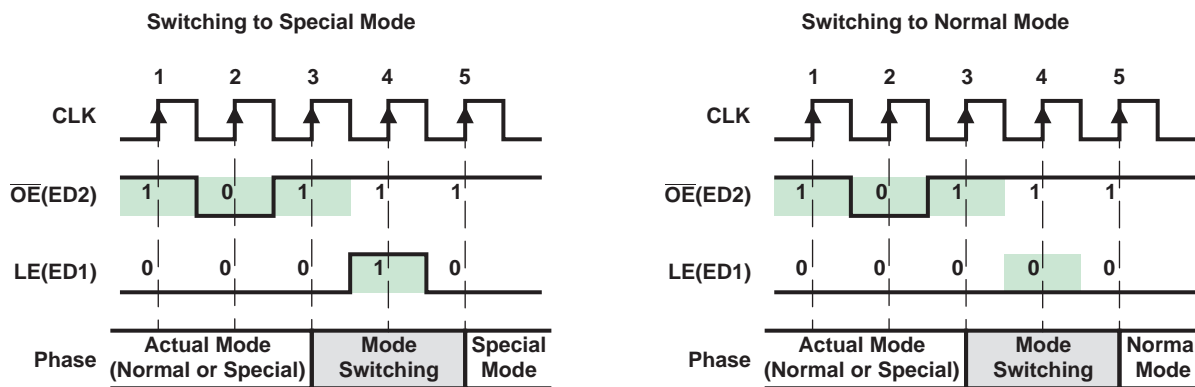


Figure 15. Mode Switching

As shown in Figure 15, once a one-clock-wide short pulse (101) of  $\overline{OE}(ED2)$  appears, TLC5916/TLC5917 enters the Mode Switching phase. At the fourth rising edge of CLK, if LE(ED1) is sampled as voltage high, TLC5916/TLC5917 switches to Special Mode; otherwise, it switches to Normal Mode. The signal LE(ED1) between the third and the fifth rising edges of CLK cannot latch any data. Its level is used only to determine into which mode to switch. However, the short pulse of  $\overline{OE}(ED2)$  can still enable the output ports. During mode switching, the serial data can still be transferred through SDI and shifted out from SDO.

#### NOTES:

1. The signal sequence for the mode switching may be used frequently to ensure that TLC5916/TLC5917 is in the proper mode.
2. The 1 and 0 on the LE(ED1) signal are sampled at the rising edge of CLK. The X means its level does not affect the result of mode switching mechanism.
3. After power on, the default operation mode is Normal Mode.

#### Normal Mode Phase

Serial data is transferred into TLC5916/TLC5917 via SDI, shifted in the Shift Register, and output via SDO. LE(ED1) can latch the serial data in the Shift Register to the Output Latch.  $\overline{OE}(ED2)$  enables the output drivers to sink current. These functions differ only as described in Operation Mode Switching, in which case, a short pulse triggers TLC5916/TLC5917 to switch the operation mode. However, as long as LE(ED1) is high in the Mode Switching phase, TLC5916/TLC5917 remains in the Normal Mode, as if no mode switching occurred.

#### Special Mode Phase

In the Special Mode, as long as  $\overline{OE}(ED2)$  is not low, the serial data is shifted to the Shift Register via SDI and shifted out via SDO, as in the Normal Mode. However, there are two differences between the Special Mode and the Normal Mode, as shown in the following sections.

### Reading Error Status Code in Special Mode

When  $\overline{OE}(ED2)$  is pulled low while in Special Mode, error detection and load error status codes are loaded into the Shift Register, in addition to enabling output ports to sink current. Figure 16 shows the timing sequence for error detection. The 0 and 1 signal levels are sampled at the rising edge of each CLK. At least three zeros must be sampled at the voltage low signal  $\overline{OE}(ED2)$ . Immediately after the second zero is sampled, the data input source of the Shift Register changes to the 8-bit parallel Error Status Code register, instead of from the serial data on SDI. Normally, the error status codes are generated at least 2  $\mu$ s after the falling edge of  $\overline{OE}(ED2)$ . The occurrence of the third or later zero saves the detected error status codes into the Shift Register. Therefore, when  $\overline{OE}(ED2)$  is low, the serial data cannot be shifted into TLC5916/TLC5917 via SDI. When  $\overline{OE}(ED2)$  is pulled high, the data input source of the Shift Register is changed back to SDI. At the same time, the output ports are disabled and the error detection is completed. Then, the error status codes saved in the Shift Register can be shifted out via SDO bit by bit along with CLK, as well as the new serial data can be shifted into TLC5916/TLC5917 via SDI.

While in Special Mode, the TLC5916/TLC5917 cannot simultaneously transfer serial data and detect LED load error status.

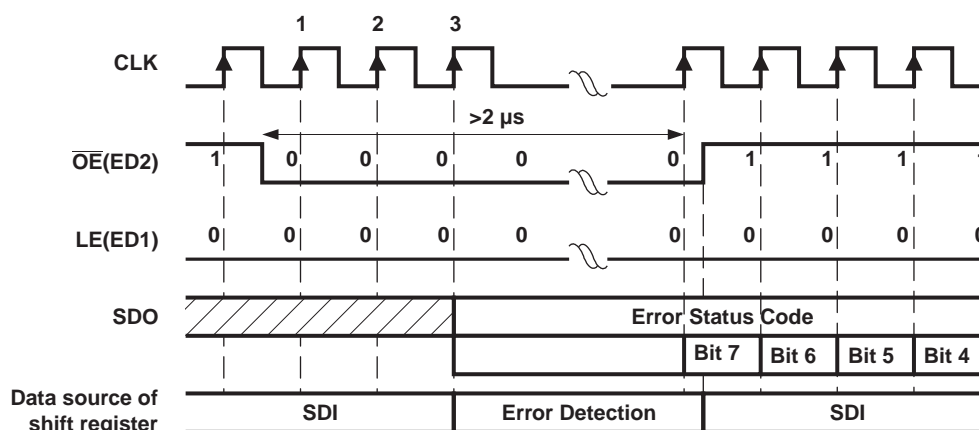


Figure 16. Reading Error Status Code

### Writing Configuration Code in Special Mode

When in Special Mode, the active high signal LE(ED1) latches the serial data in the Shift Register to the Configuration Latch, instead of the Output Latch. The latched serial data is used as the Configuration Code.

The code is stored until power off or the Configuration Latch is rewritten. As shown in Figure 17, the timing for writing the Configuration Code is the same as the timing in the Normal Mode to latching output channel data. Both the Configuration Code and Error Status Code are transferred in the common 8-bit Shift Register. Users must pay attention to the sequence of error detection and current adjustment to avoid the Configuration Code being overwritten by Error Status Code.

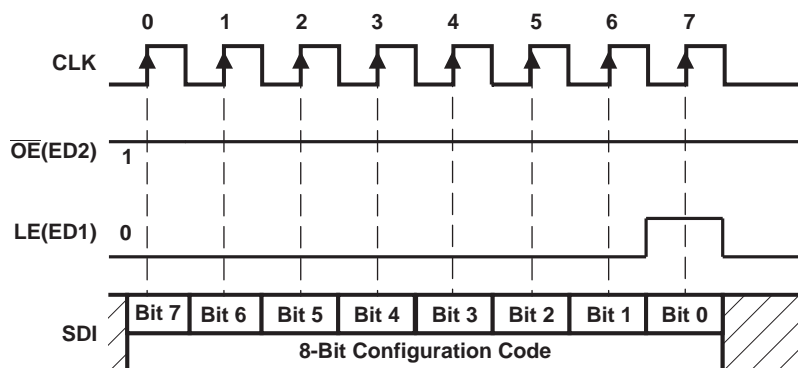


Figure 17. Writing Configuration Code

### Open-Circuit Detection Principle

The LED Open-Circuit Detection compares the effective current level  $I_{OUT}$  with the open load detection threshold current  $I_{OUT,Th}$ . If  $I_{OUT}$  is below the  $I_{OUT,Th}$  threshold, the TLC5916/TLC5917 detects an open-load condition. This error status can be read as an error status code in the Special Mode. For open-circuit error detection, a channel must be on.

**Table 1. Open-Circuit Detection**

| STATE OF OUTPUT PORT | CONDITION OF OUTPUT CURRENT     | ERROR STATUS CODE            | MEANING                |
|----------------------|---------------------------------|------------------------------|------------------------|
| Off                  | $I_{OUT} = 0 \text{ mA}$        | 0                            | Detection not possible |
| On                   | $I_{OUT} < I_{OUT,Th}^{(1)}$    | 0                            | Open circuit           |
|                      | $I_{OUT} \geq I_{OUT,Th}^{(1)}$ | Channel n error status bit 1 | Normal                 |

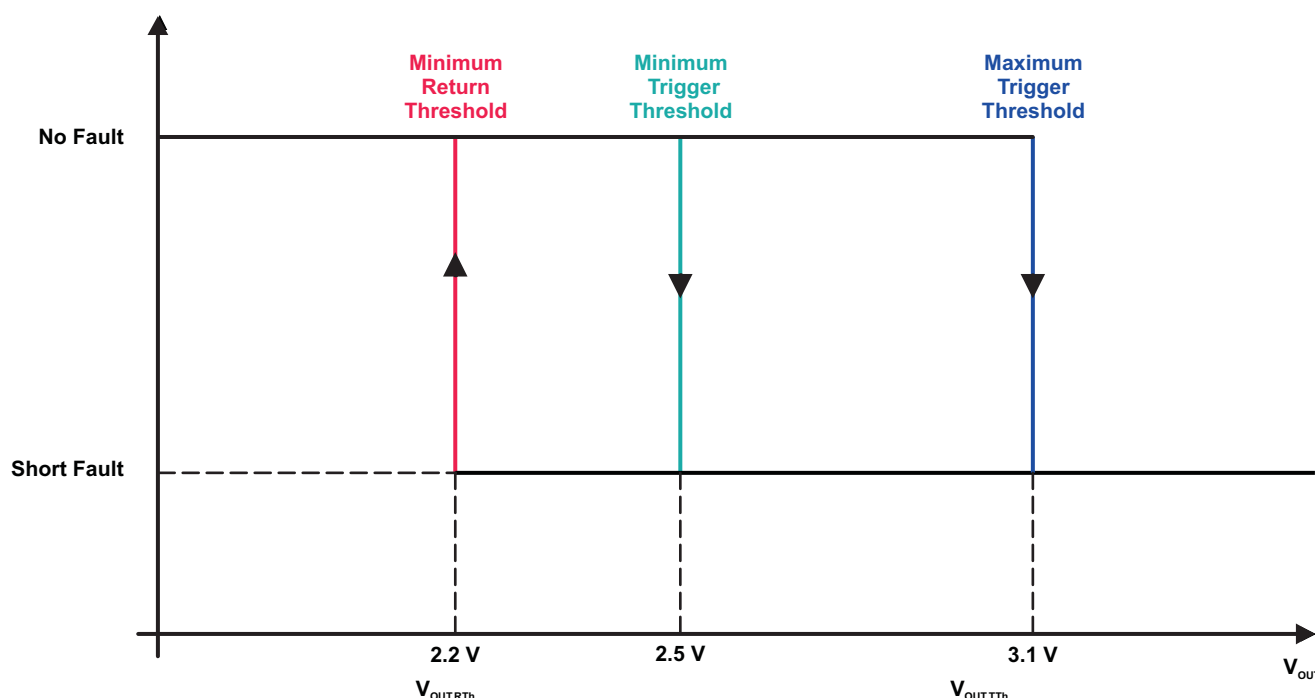
(1)  $I_{OUT,Th} = 0.5 \times I_{OUT,target}$  (typical)

### Short-Circuit Detection Principle (TLC5917 Only)

The LED short-circuit detection compares the effective voltage level ( $V_{OUT}$ ) with the shorted-load detection threshold voltages  $V_{OUT,TTh}$  and  $V_{OUT,RTh}$ . If  $V_{OUT}$  is above the  $V_{OUT,TTh}$  threshold, the TLC5917 detects an shorted-load condition. If  $V_{OUT}$  is below the  $V_{OUT,RTh}$  threshold, no error is detected/error bit is reset. This error status can be read as an error status code in the Special Mode. For short-circuit error detection, a channel must be on.

**Table 2. Shorted-Load Detection**

| STATE OF OUTPUT PORT | CONDITION OF OUTPUT VOLTAGE | ERROR STATUS CODE | MEANING                |
|----------------------|-----------------------------|-------------------|------------------------|
| Off                  | $I_{OUT} = 0 \text{ mA}$    | 0                 | Detection not possible |
| On                   | $V_{OUT} \geq V_{OUT,TTh}$  | 0                 | Short circuit          |
|                      | $V_{OUT} < V_{OUT,RTh}$     | 1                 | Normal                 |



**Figure 18. Short-Circuit Detection Principle**

## Overtemperature Detection and Shutdown

TLC5916/TLC5917 is equipped with a global overtemperature sensor and eight individual, channel-specific, overtemperature sensors.

- When the global sensor reaches the trip temperature, all output channels are shut down, and the error status is stored in the internal Error Status register of every channel. After shutdown, the channels automatically restart after cooling down, if the control signal (output latch) remains on. The stored error status is not reset after cooling down and can be read out as the error status code in the Special Mode.
- When one of the channel-specific sensors reaches trip temperature, only the affected output channel is shut down, and the error status is stored only in the internal Error Status register of the affected channel. After shutdown, the channel automatically restarts after cooling down, if the control signal (output latch) remains on. The stored error status is not reset after cooling down and can be read out as error status code in the Special Mode.

For channel-specific overtemperature error detection, a channel must be on.

The error status code is reset when TLC5916/TLC5917 returns to Normal Mode.

**Table 3. Overtemperature Detection<sup>(1)</sup>**

| STATE OF OUTPUT PORT     | CONDITION                             | ERROR STATUS CODE              | MEANING                   |
|--------------------------|---------------------------------------|--------------------------------|---------------------------|
| Off                      | $I_{OUT} = 0 \text{ mA}$              | 0                              |                           |
| On                       | $T_j < T_{j,trip} \text{ global}$     | 1                              | Normal                    |
| On → all channels<br>Off | $T_j > T_{j,trip} \text{ global}$     | All error status bits = 0      | Global overtemperature    |
| On                       | $T_j < T_{j,trip} \text{ channel } n$ | 1                              | Normal                    |
| On → Off                 | $T_j > T_{j,trip} \text{ channel } n$ | Channel n error status bit = 0 | Channel n overtemperature |

(1) The global shutdown threshold temperature is approximately 170°C.

## 8-Bit Configuration Code and Current Gain

Bit definition of the Configuration Code in the Configuration Latch is shown in [Table 4](#).

**Table 4. Bit Definition of 8-Bit Configuration Code**

|         | Bit 0 | Bit 1 | Bit 2 | Bit 3 | Bit 4 | Bit 5 | Bit 6 | Bit 7 |
|---------|-------|-------|-------|-------|-------|-------|-------|-------|
| Meaning | CM    | HC    | CC0   | CC1   | CC2   | CC3   | CC4   | CC5   |
| Default | 1     | 1     | 1     | 1     | 1     | 1     | 1     | 1     |

Bit 7 is first sent into TLC5916/TLC5917 via SDI. Bits 1 to 7 {HC, CC[0:5]} determine the voltage gain (VG) that affects the voltage at R-EXT and indirectly affects the reference current,  $I_{ref}$ , flowing through the external resistor at R-EXT. Bit 0 is the Current Multiplier (CM) that determines the ratio  $I_{OUT,target}/I_{ref}$ . Each combination of VG and CM gives a specific Current Gain (CG).

- VG: the relationship between {HC, CC[0:5]} and the voltage gain is calculated as shown below:  

$$VG = (1 + HC) \times (1 + D/64) / 4$$

$$D = CC0 \times 2^5 + CC1 \times 2^4 + CC2 \times 2^3 + CC3 \times 2^2 + CC4 \times 2^1 + CC5 \times 2^0$$
Where HC is 1 or 0, and D is the binary value of CC[0:5]. So, the VG could be regarded as a floating-point number with 1-bit exponent HC and 6-bit mantissa CC[0:5]. {HC, CC[0:5]} divides the programmable voltage gain VG into 128 steps and two sub-bands:  
Low voltage sub-band (HC = 0):  $VG = 1/4 \sim 127/256$ , linearly divided into 64 steps  
High voltage sub-band (HC = 1):  $VG = 1/2 \sim 127/128$ , linearly divided into 64 steps
- CM: In addition to determining the ratio  $I_{OUT,target}/I_{ref}$ , CM limits the output current range.  
High Current Multiplier (CM = 1):  $I_{OUT,target}/I_{ref} = 15$ , suitable for output current range  $I_{OUT} = 10 \text{ mA}$  to  $120 \text{ mA}$ .  
Low Current Multiplier (CM = 0):  $I_{OUT,target}/I_{ref} = 5$ , suitable for output current range  $I_{OUT} = 5 \text{ mA}$  to  $40 \text{ mA}$
- CG: The total Current Gain is defined as the following.  

$$V_{R-EXT} = 1.26 \text{ V} \times VG$$

$$I_{ref} = V_{R-EXT}/R_{ext}$$
, if the external resistor,  $R_{ext}$ , is connected to ground.  

$$I_{OUT,target} = I_{ref} \times 15 \times 3^{CM-1} = 1.26 \text{ V}/R_{ext} \times VG \times 15 \times 3^{CM-1} = (1.26 \text{ V}/R_{ext} \times 15) \times CG$$

$$CG = VG \times 3^{CM-1}$$
Therefore,  $CG = (1/12)$  to  $(127/128)$ , and it is divided into 256 steps. If  $CG = 127/128 = 0.992$ , the  $I_{OUT,target} = R_{ext} \times CG$ .

### Examples

- Configuration Code {CM, HC, CC[0:5]} = {1, 1, 111111}  
 $VG = 127/128 = 0.992$  and  $CG = VG \times 3^0 = VG = 0.992$
- Configuration Code = {1, 1, 000000}  
 $VG = (1 + 1) \times (1 + 0/64)/4 = 1/2 = 0.5$ , and  $CG = 0.5$
- Configuration Code = {0, 0, 000000}  
 $VG = (1 + 0) \times (1 + 0/64)/4 = 1/4$ , and  $CG = (1/4) \times 3^{-1} = 1/12$

After power on, the default value of the Configuration Code {CM, HC, CC[0:5]} is {1, 1, 111111}. Therefore,  $VG = CG = 0.992$ . The relationship between the Configuration Code and the Current Gain is shown in [Figure 19](#).

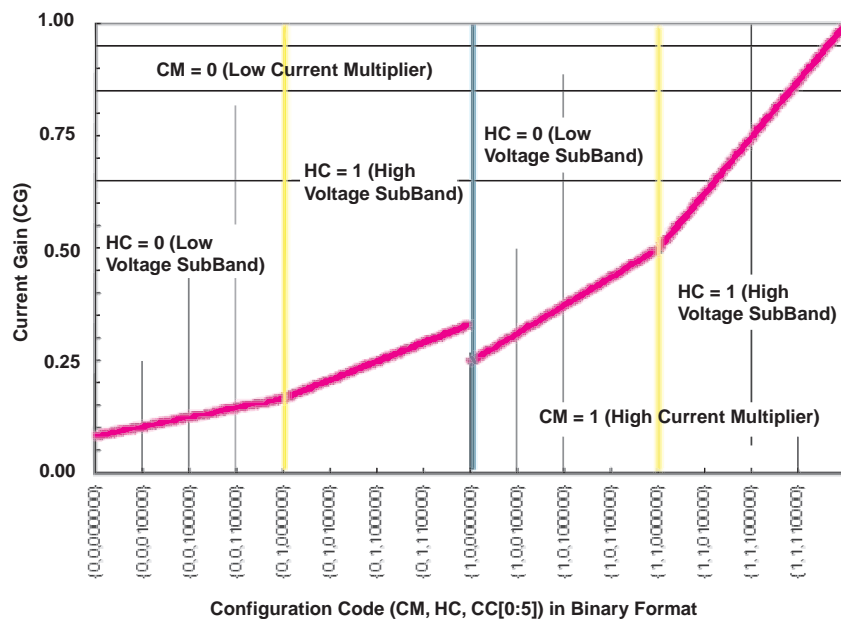


Figure 19. Current Gain vs Configuration Code

**PACKAGING INFORMATION**

| Orderable Device | Status <sup>(1)</sup> | Package Type | Package Drawing | Pins | Package Qty | Eco Plan <sup>(2)</sup> | Lead/Ball Finish | MSL Peak Temp <sup>(3)</sup> |
|------------------|-----------------------|--------------|-----------------|------|-------------|-------------------------|------------------|------------------------------|
| TLC5916ID        | ACTIVE                | SOIC         | D               | 16   | 40          | Green (RoHS & no Sb/Br) | CU NIPDAU        | Level-1-260C-UNLIM           |
| TLC5916IDG4      | ACTIVE                | SOIC         | D               | 16   | 40          | Green (RoHS & no Sb/Br) | CU NIPDAU        | Level-1-260C-UNLIM           |
| TLC5916IDR       | ACTIVE                | SOIC         | D               | 16   | 2500        | Green (RoHS & no Sb/Br) | CU NIPDAU        | Level-1-260C-UNLIM           |
| TLC5916IDRG4     | ACTIVE                | SOIC         | D               | 16   | 2500        | Green (RoHS & no Sb/Br) | CU NIPDAU        | Level-1-260C-UNLIM           |
| TLC5916IN        | ACTIVE                | PDIP         | N               | 16   | 25          | Pb-Free (RoHS)          | CU NIPDAU        | N / A for Pkg Type           |
| TLC5916INE4      | ACTIVE                | PDIP         | N               | 16   | 25          | Pb-Free (RoHS)          | CU NIPDAU        | N / A for Pkg Type           |
| TLC5916IPW       | ACTIVE                | TSSOP        | PW              | 16   | 90          | Green (RoHS & no Sb/Br) | CU NIPDAU        | Level-1-260C-UNLIM           |
| TLC5916IPWG4     | ACTIVE                | TSSOP        | PW              | 16   | 90          | Green (RoHS & no Sb/Br) | CU NIPDAU        | Level-1-260C-UNLIM           |
| TLC5916IPWR      | ACTIVE                | TSSOP        | PW              | 16   | 2000        | Green (RoHS & no Sb/Br) | CU NIPDAU        | Level-1-260C-UNLIM           |
| TLC5916IPWRG4    | ACTIVE                | TSSOP        | PW              | 16   | 2000        | Green (RoHS & no Sb/Br) | CU NIPDAU        | Level-1-260C-UNLIM           |
| TLC5917ID        | ACTIVE                | SOIC         | D               | 16   | 40          | Green (RoHS & no Sb/Br) | CU NIPDAU        | Level-1-260C-UNLIM           |
| TLC5917IDG4      | ACTIVE                | SOIC         | D               | 16   | 40          | Green (RoHS & no Sb/Br) | CU NIPDAU        | Level-1-260C-UNLIM           |
| TLC5917IDR       | ACTIVE                | SOIC         | D               | 16   | 2500        | Green (RoHS & no Sb/Br) | CU NIPDAU        | Level-1-260C-UNLIM           |
| TLC5917IDRG4     | ACTIVE                | SOIC         | D               | 16   | 2500        | Green (RoHS & no Sb/Br) | CU NIPDAU        | Level-1-260C-UNLIM           |
| TLC5917IN        | ACTIVE                | PDIP         | N               | 16   | 25          | Pb-Free (RoHS)          | CU NIPDAU        | N / A for Pkg Type           |
| TLC5917INE4      | ACTIVE                | PDIP         | N               | 16   | 25          | Pb-Free (RoHS)          | CU NIPDAU        | N / A for Pkg Type           |
| TLC5917IPW       | ACTIVE                | TSSOP        | PW              | 16   | 90          | Green (RoHS & no Sb/Br) | CU NIPDAU        | Level-1-260C-UNLIM           |
| TLC5917IPWG4     | ACTIVE                | TSSOP        | PW              | 16   | 90          | Green (RoHS & no Sb/Br) | CU NIPDAU        | Level-1-260C-UNLIM           |
| TLC5917IPWR      | ACTIVE                | TSSOP        | PW              | 16   | 2000        | Green (RoHS & no Sb/Br) | CU NIPDAU        | Level-1-260C-UNLIM           |
| TLC5917IPWRG4    | ACTIVE                | TSSOP        | PW              | 16   | 2000        | Green (RoHS & no Sb/Br) | CU NIPDAU        | Level-1-260C-UNLIM           |

<sup>(1)</sup> The marketing status values are defined as follows:

**ACTIVE:** Product device recommended for new designs.

**LIFEBUY:** TI has announced that the device will be discontinued, and a lifetime-buy period is in effect.

**NRND:** Not recommended for new designs. Device is in production to support existing customers, but TI does not recommend using this part in a new design.

**PREVIEW:** Device has been announced but is not in production. Samples may or may not be available.

**OBsolete:** TI has discontinued the production of the device.

<sup>(2)</sup> Eco Plan - The planned eco-friendly classification: Pb-Free (RoHS), Pb-Free (RoHS Exempt), or Green (RoHS & no Sb/Br) - please check <http://www.ti.com/productcontent> for the latest availability information and additional product content details.



**TBD:** The Pb-Free/Green conversion plan has not been defined.

**Pb-Free (RoHS):** TI's terms "Lead-Free" or "Pb-Free" mean semiconductor products that are compatible with the current RoHS requirements for all 6 substances, including the requirement that lead not exceed 0.1% by weight in homogeneous materials. Where designed to be soldered at high temperatures, TI Pb-Free products are suitable for use in specified lead-free processes.

**Pb-Free (RoHS Exempt):** This component has a RoHS exemption for either 1) lead-based flip-chip solder bumps used between the die and package, or 2) lead-based die adhesive used between the die and leadframe. The component is otherwise considered Pb-Free (RoHS compatible) as defined above.

**Green (RoHS & no Sb/Br):** TI defines "Green" to mean Pb-Free (RoHS compatible), and free of Bromine (Br) and Antimony (Sb) based flame retardants (Br or Sb do not exceed 0.1% by weight in homogeneous material)

(3) MSL, Peak Temp. -- The Moisture Sensitivity Level rating according to the JEDEC industry standard classifications, and peak solder temperature.

**Important Information and Disclaimer:** The information provided on this page represents TI's knowledge and belief as of the date that it is provided. TI bases its knowledge and belief on information provided by third parties, and makes no representation or warranty as to the accuracy of such information. Efforts are underway to better integrate information from third parties. TI has taken and continues to take reasonable steps to provide representative and accurate information but may not have conducted destructive testing or chemical analysis on incoming materials and chemicals. TI and TI suppliers consider certain information to be proprietary, and thus CAS numbers and other limited information may not be available for release.

In no event shall TI's liability arising out of such information exceed the total purchase price of the TI part(s) at issue in this document sold by TI to Customer on an annual basis.

**OTHER QUALIFIED VERSIONS OF TLC5916, TLC5917 :**

- Automotive: [TLC5916-Q1](#), [TLC5917-Q1](#)

NOTE: Qualified Version Definitions:

- Automotive - Q100 devices qualified for high-reliability automotive applications targeting zero defects

**TAPE AND REEL INFORMATION**


\*All dimensions are nominal

| Device      | Package Type | Package Drawing | Pins | SPQ  | Reel Diameter (mm) | Reel Width W1 (mm) | A0 (mm) | B0 (mm) | K0 (mm) | P1 (mm) | W (mm) | Pin1 Quadrant |
|-------------|--------------|-----------------|------|------|--------------------|--------------------|---------|---------|---------|---------|--------|---------------|
| TLC5916IDR  | SOIC         | D               | 16   | 2500 | 330.0              | 16.4               | 6.5     | 10.3    | 2.1     | 8.0     | 16.0   | Q1            |
| TLC5916IPWR | TSSOP        | PW              | 16   | 2000 | 330.0              | 12.4               | 6.9     | 5.6     | 1.6     | 8.0     | 12.0   | Q1            |
| TLC5917IDR  | SOIC         | D               | 16   | 2500 | 330.0              | 16.4               | 6.5     | 10.3    | 2.1     | 8.0     | 16.0   | Q1            |
| TLC5917IPWR | TSSOP        | PW              | 16   | 2000 | 330.0              | 12.4               | 6.9     | 5.6     | 1.6     | 8.0     | 12.0   | Q1            |

## TAPE AND REEL BOX DIMENSIONS

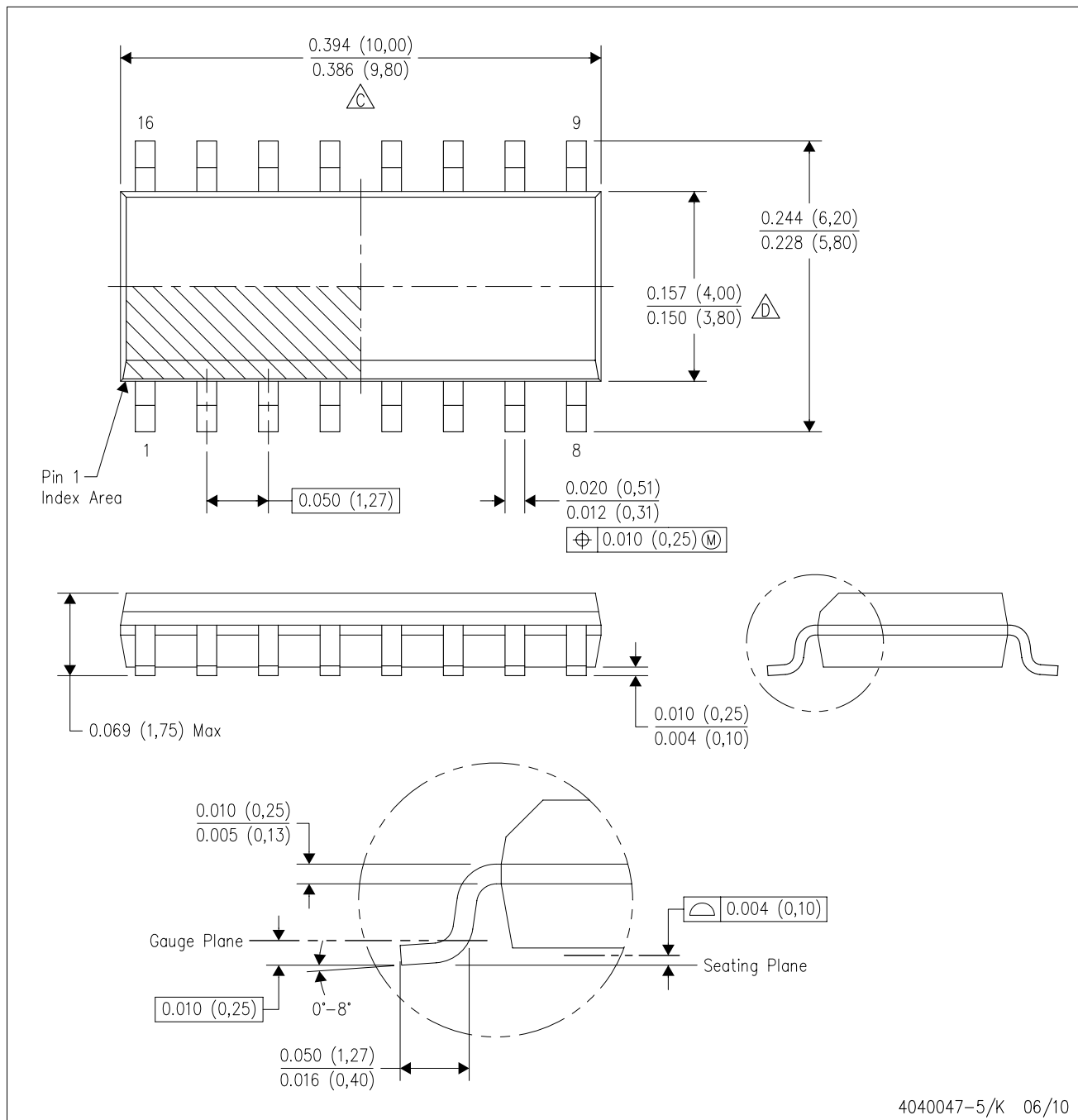


\*All dimensions are nominal

| Device      | Package Type | Package Drawing | Pins | SPQ  | Length (mm) | Width (mm) | Height (mm) |
|-------------|--------------|-----------------|------|------|-------------|------------|-------------|
| TLC5916IDR  | SOIC         | D               | 16   | 2500 | 333.2       | 345.9      | 28.6        |
| TLC5916IPWR | TSSOP        | PW              | 16   | 2000 | 346.0       | 346.0      | 29.0        |
| TLC5917IDR  | SOIC         | D               | 16   | 2500 | 333.2       | 345.9      | 28.6        |
| TLC5917IPWR | TSSOP        | PW              | 16   | 2000 | 346.0       | 346.0      | 29.0        |

D (R-PDSO-G16)

PLASTIC SMALL-OUTLINE PACKAGE



4040047-5/K 06/10

NOTES:

- All linear dimensions are in inches (millimeters).
- This drawing is subject to change without notice.
- Body length does not include mold flash, protrusions, or gate burrs. Mold flash, protrusions, or gate burrs shall not exceed .006 (0,15) per end.
- Body width does not include interlead flash. Interlead flash shall not exceed .017 (0,43) per side.
- Reference JEDEC MS-012 variation AC.

## PW (R-PDSO-G\*\*)

## PLASTIC SMALL-OUTLINE PACKAGE

14 PINS SHOWN



- NOTES: A. All linear dimensions are in millimeters.  
 B. This drawing is subject to change without notice.  
 C. Body dimensions do not include mold flash or protrusion not to exceed 0,15.  
 D. Falls within JEDEC MO-153

## IMPORTANT NOTICE

Texas Instruments Incorporated and its subsidiaries (TI) reserve the right to make corrections, modifications, enhancements, improvements, and other changes to its products and services at any time and to discontinue any product or service without notice. Customers should obtain the latest relevant information before placing orders and should verify that such information is current and complete. All products are sold subject to TI's terms and conditions of sale supplied at the time of order acknowledgment.

TI warrants performance of its hardware products to the specifications applicable at the time of sale in accordance with TI's standard warranty. Testing and other quality control techniques are used to the extent TI deems necessary to support this warranty. Except where mandated by government requirements, testing of all parameters of each product is not necessarily performed.

TI assumes no liability for applications assistance or customer product design. Customers are responsible for their products and applications using TI components. To minimize the risks associated with customer products and applications, customers should provide adequate design and operating safeguards.

TI does not warrant or represent that any license, either express or implied, is granted under any TI patent right, copyright, mask work right, or other TI intellectual property right relating to any combination, machine, or process in which TI products or services are used. Information published by TI regarding third-party products or services does not constitute a license from TI to use such products or services or a warranty or endorsement thereof. Use of such information may require a license from a third party under the patents or other intellectual property of the third party, or a license from TI under the patents or other intellectual property of TI.

Reproduction of TI information in TI data books or data sheets is permissible only if reproduction is without alteration and is accompanied by all associated warranties, conditions, limitations, and notices. Reproduction of this information with alteration is an unfair and deceptive business practice. TI is not responsible or liable for such altered documentation. Information of third parties may be subject to additional restrictions.

Resale of TI products or services with statements different from or beyond the parameters stated by TI for that product or service voids all express and any implied warranties for the associated TI product or service and is an unfair and deceptive business practice. TI is not responsible or liable for any such statements.

TI products are not authorized for use in safety-critical applications (such as life support) where a failure of the TI product would reasonably be expected to cause severe personal injury or death, unless officers of the parties have executed an agreement specifically governing such use. Buyers represent that they have all necessary expertise in the safety and regulatory ramifications of their applications, and acknowledge and agree that they are solely responsible for all legal, regulatory and safety-related requirements concerning their products and any use of TI products in such safety-critical applications, notwithstanding any applications-related information or support that may be provided by TI. Further, Buyers must fully indemnify TI and its representatives against any damages arising out of the use of TI products in such safety-critical applications.

TI products are neither designed nor intended for use in military/aerospace applications or environments unless the TI products are specifically designated by TI as military-grade or "enhanced plastic." Only products designated by TI as military-grade meet military specifications. Buyers acknowledge and agree that any such use of TI products which TI has not designated as military-grade is solely at the Buyer's risk, and that they are solely responsible for compliance with all legal and regulatory requirements in connection with such use.

TI products are neither designed nor intended for use in automotive applications or environments unless the specific TI products are designated by TI as compliant with ISO/TS 16949 requirements. Buyers acknowledge and agree that, if they use any non-designated products in automotive applications, TI will not be responsible for any failure to meet such requirements.

Following are URLs where you can obtain information on other Texas Instruments products and application solutions:

| Products                    |  | Applications               |  |
|-----------------------------|--|----------------------------|--|
| Amplifiers                  | <a href="http://amplifier.ti.com">amplifier.ti.com</a>             | Audio                      | <a href="http://www.ti.com/audio">www.ti.com/audio</a>                                   |
| Data Converters             | <a href="http://dataconverter.ti.com">dataconverter.ti.com</a>     | Automotive                 | <a href="http://www.ti.com/automotive">www.ti.com/automotive</a>                         |
| DLP® Products               | <a href="http://www.dlp.com">www.dlp.com</a>                       | Communications and Telecom | <a href="http://www.ti.com/communications">www.ti.com/communications</a>                 |
| DSP                         | <a href="http://dsp.ti.com">dsp.ti.com</a>                         | Computers and Peripherals  | <a href="http://www.ti.com/computers">www.ti.com/computers</a>                           |
| Clocks and Timers           | <a href="http://www.ti.com/clocks">www.ti.com/clocks</a>           | Consumer Electronics       | <a href="http://www.ti.com/consumer-apps">www.ti.com/consumer-apps</a>                   |
| Interface                   | <a href="http://interface.ti.com">interface.ti.com</a>             | Energy                     | <a href="http://www.ti.com/energy">www.ti.com/energy</a>                                 |
| Logic                       | <a href="http://logic.ti.com">logic.ti.com</a>                     | Industrial                 | <a href="http://www.ti.com/industrial">www.ti.com/industrial</a>                         |
| Power Mgmt                  | <a href="http://power.ti.com">power.ti.com</a>                     | Medical                    | <a href="http://www.ti.com/medical">www.ti.com/medical</a>                               |
| Microcontrollers            | <a href="http://microcontroller.ti.com">microcontroller.ti.com</a> | Security                   | <a href="http://www.ti.com/security">www.ti.com/security</a>                             |
| RFID                        | <a href="http://www.ti-rfid.com">www.ti-rfid.com</a>               | Space, Avionics & Defense  | <a href="http://www.ti.com/space-avionics-defense">www.ti.com/space-avionics-defense</a> |
| RF/IF and ZigBee® Solutions | <a href="http://www.ti.com/lprf">www.ti.com/lprf</a>               | Video and Imaging          | <a href="http://www.ti.com/video">www.ti.com/video</a>                                   |
|                             |  | Wireless                   | <a href="http://www.ti.com/wireless-apps">www.ti.com/wireless-apps</a>                   |