




- **HIGH STABILITY CERAMIC SENSOR**
- **SUPPLY VOLTAGE 13 - 36Vdc**
- **4-20mA TWO-WIRE OUTPUT**
- **ZERO + SPAN ADJUSTMENT ON-SITE**
- **RANGES 500mbar to 400bar**
- **DIN RAIL MOUNTABLE DIN 46277-1**
- **PROTECTED TO IP65**
-  **INTRINSICALLY SAFE MODELS**

### DESCRIPTION

The PR3000 pressure transmitter incorporates the highly stable ceramic thick film pressure diaphragm, with a unique high performance amplifier to give excellent reliability over a long service life.

DIN Rail or bulkhead mountable, the transmitter is protected to IP65.

Applications include the static and dynamic measurement of liquids or gases for measurement and control applications. The DIN Rail mounting facility offers ideal use in control panels for pneumatic, hydraulic, H.V.A.C. or industrial process applications

Electrical connection is DIN plug and socket, access to zero and span adjustment is made by removing top plate for easy on-site adjustment.

Pressure connection as standard is via a 1/4" BSP female connection.

Ranges available from 0-500mbar to 0-400bar.

**Tel: 01978 262255**



**Fax: 01978 262233**

### SPECIFICATION

#### INPUT

Pressure ranges ..... 0-500 mbar to 0-400 bar  
Pressure reference ..... Gauge or Absolute  
Over pressure ..... 2 x Rated pressure

#### OUTPUT

Span ..... 4-20 mA  
Type ..... 2 wire

#### ACCURACY

Zero offset .....  $<\pm 1\%$  FSO  
Span tolerance .....  $<\pm 1\%$  FSO  
Combined non-linearity / hysteresis .....  $<\pm 0.25\%$  FSO  
Repeatability .....  $<\pm 0.1\%$  FSO  
Long term stability .....  $<\pm 0.2\%$  FSO / 6 months

#### ELECTRICAL

Supply voltage ..... 13-36Vdc  
Supply voltage effects .....  $3\mu A/V$   
Reverse polarity ..... Protected

Load driving capability .....  $150\Omega$  @ 36Vdc  
Output short circuit (to ground) No damage  
Insulation resistance .....  $100M\Omega$  @ 100Vdc elec conn to case  
Response time (63%) ..... 1.5ms  
Adjustment .....  $\pm 10\%$  FSO Zero and Span

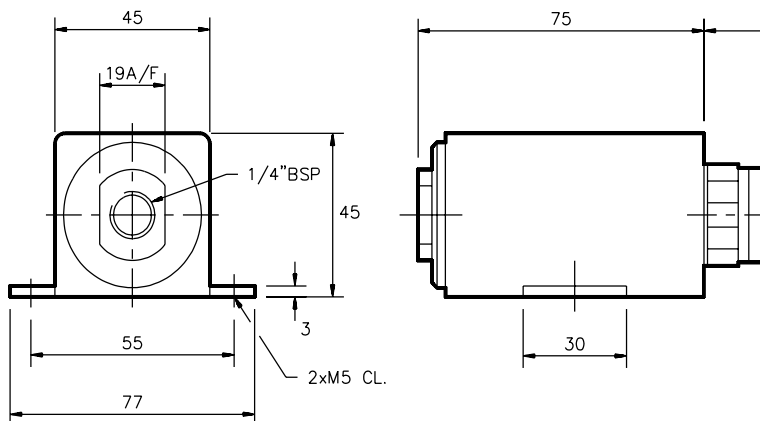
#### ENVIRONMENTAL

Pressure media ..... Compatible with alumina +304 S.S  
Operating temperature range ..... -20 to +85 °C  
Storage temperature range ..... -40 to +90 °C  
Thermal effect Zero .....  $<\pm 0.03\%$  FSO/°C  
Thermal sensitivity .....  $<\pm 0.03\%$  FSO/°C  
Vibration tolerance ..... 10g's to 50Hz  
Mechanical shock tolerance ..... 15g@s (11ms)  
Operating humidity ..... 95% RH

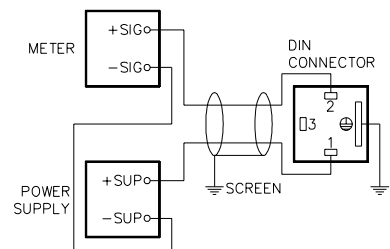
#### PHYSICAL

Pressure connection ..... 1/4" BSP female  
Electrical connection ..... DIN plug + socket to DIN43650  
Mounting ..... DIN Rail mounting to DIN46277-1  
Enclosure rating ..... IP65  
Natural frequency ..... 12 KHz (min)  
Weight ..... 375 grams  
Materials ..... 300 series stain/stl body/Connector alumina diaphragm

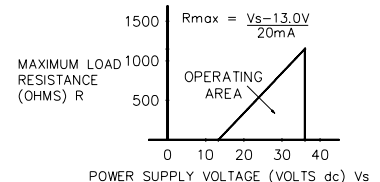
### DIMENSIONS / WIRING DETAILS



### TRANSMITTER WIRING DIAGRAM



### LOAD DRIVING CHART



### ORDERING INFORMATION

STATE MODEL NUMBER AND PRESSURE RANGE REQUIRED:-  
i.e. PR3000 0-10bar

MODEL NO.	DESCRIPTION
PR3000 bar	Transmitter 0-500 mbar to 0-400

### PRESSURE RANGES

-1 - 0 bar Vac	0 - 16 bar
0 - 500 mbar	0 - 25 bar
0 - 1 bar	0 - 40 bar
0 - 1.6 bar	0 - 60 bar
0 - 2.5 bar	0 - 100 bar
0 - 4 bar	0 - 160 bar
0 - 6 bar	0 - 250 bar
0 - 10 bar	0 - 400 bar

Tel: 01978 262255



Fax: 01978 262233

**ellison sensors international**

Sensor House, Wrexham Technology Park, Wrexham, LL13 7YP, Wales, U.K.