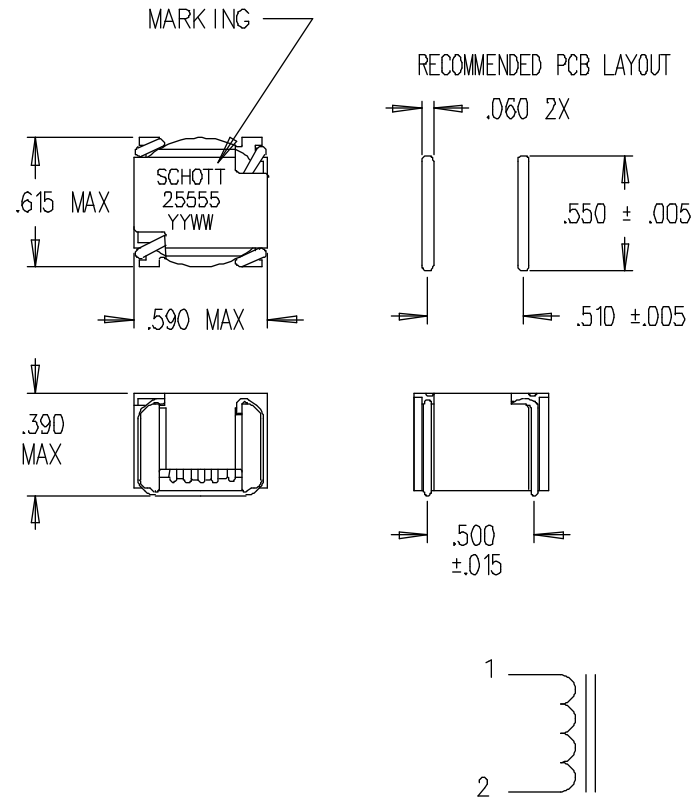


<p>TITLE</p> <p>INDUCTOR</p>	<p>SCHOTT CORPORATION</p> <p>1000 PARKERS LAKE ROAD MINNEAPOLIS, MN 55391</p>	<p>PART NUMBER</p> <p>25555</p>
<p>SPECIFICATIONS</p> <p>1. INDUCTANCE: @ 0.1 Vrms, 10 KHz @ 0 Adc = 40.5 μHy \pm 10% @ 2.7 Adc = 21.8 μHy MIN</p> <p>2. DC RESISTANCE: 85 mΩ MAX</p>		



All statements and technical information contained herein are believed to be accurate, but the accuracy and completeness thereof is not guaranteed. "Schott" is a trademark of Schott Corporation. All other trademarks and trade names are the property of their respective holders