



FCI CONFIDENTIAL

PRODUCT NUMBER
20020008-XXX1B01LF

20020008- [] [] [] 1 B 0 1 L F

PITCH

C: 3.50 mm
D: 3.81 mm
G: 5.00 mm
H: 5.08 mm

POLES

02: 2 POLES
03: 3 POLES
04: 4 POLES
|
|
24: 24 POLES

LF: DENOTED RoHS COMPATIBLE

PROPERTY TABLE

FCI SERIES NAME	02-350	02-381	02-500	02-508
PITCH (mm)	3.50	3.81	5.00	5.08
VOLTAGE RATING (VAC)	300	300	300	300
CURRENT RATING (A)	8	8	12	12
APPLICABLE WIRE RANGE(AWG)	16~28	16~28	12~24	12~24
WIRE CROSS SECTION (mm*mm)	1.5~0.15	1.5~0.15	4.0~0.2	4.0~0.2
WIRE STRIP LENGTH(mm)	6~7	6~7	6~7	6~7
TORQUE +/-10% (N-m/Lb-in)	0.19/1.7	0.19/1.7	0.4/3.5	0.4/3.5
SCREW	M2x0.4	M2x0.4	M3x0.5	M3x0.5
WITHSTANDING VOLTAGE (kV)	1.6	1.6	1.6	1.6
OPERATING TEMP. (°C)	-40~+115	-40~+115	-40~+115	-40~+115
POLES AVAILABLE	02~24	02~24	02~24	02~24
SAFETY CERTIFICATE	CULUS		CULUS	

NOTES:

1. MATERIALS

1-1 HOUSING: THERMALPLASTIC RESIN, UL 94V-0 RATED, COLOR GREEN.

1-2 SCREW: STEEL, ZINC PLATED.

1-3 CLAMP: BRASS, NICKEL PLATED.

1-4 TERMINAL: PHOSPHOROUS BRONZES, TIN PLATED.

2. PRODUCT SPECIFICATION REFER TO FCI GS-12-625.


3. BOXED PACKAGING,

DETAILED PRODUCT PACKING SPECIFICATION REFER TO FCI GS-14-1394.

4. FCI, SAFETY CERTIFICATE LOGO AND SERIES NAME TO BE SHOWN ON PRODUCT SURFACE.

5. THE PRODUCTS WHERE THE PART NUMBER END IN "LF" MEET THE EUROPEAN UNION DIRECTIVE AND OTHER COUNTRY REGULATIONS AS DESCRIBED IN GS-22-008.

TOLERANCES UNLESS OTHERWISE SPECIFIED		rev		ecn no	dr	date
		A	DG09-0203	BF	062509	
		B	T09-1148	BF	111709	
		C	T09-1152	BF	112609	
LINEAR	X.	±0.5	D	T10-0042	WL	030310
	XX	±0.30	-	-	-	-
	XX	±0.10	-	-	-	-
ANGULAR	X'	±1'	-	-	-	-

Material			Spec ref		*	
Mat code			✓	tolerance	projection	MM ↔
Heattreat						
Plating/Finish						
Dr	BEER FU	062509			size	Scale
Eng	BEER FU	062509	Product family		A4	
Chr	GARY HSIEH	062509	Model Name		ECN	T10-0042
Appr	JOSEPH HSIA	062509	Model Revision		REL Level	RELEASED
	title			dwg no		Rev.
	TERMINAL BLOCK			20020008		D
	Pluggable plug, hook entry side					
Pro/E file	catalog no		CUSTOMER		sheet 1 of 5	

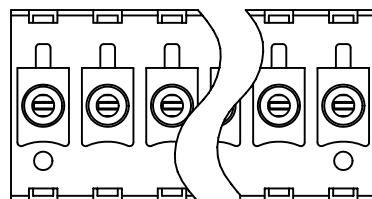
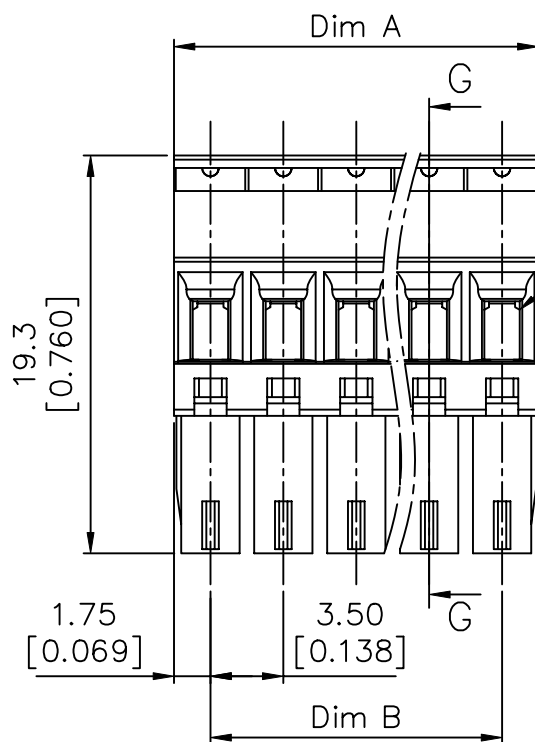
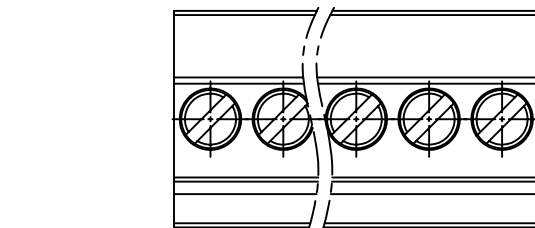
REV: 2008-04-17



This document is the property of and embodies CONFIDENTIAL and PROPRIETARY information of FCI. No part of the information shown on this document may be used in any way or disclosed to others without the written consent of FCI. Copyright FCI.

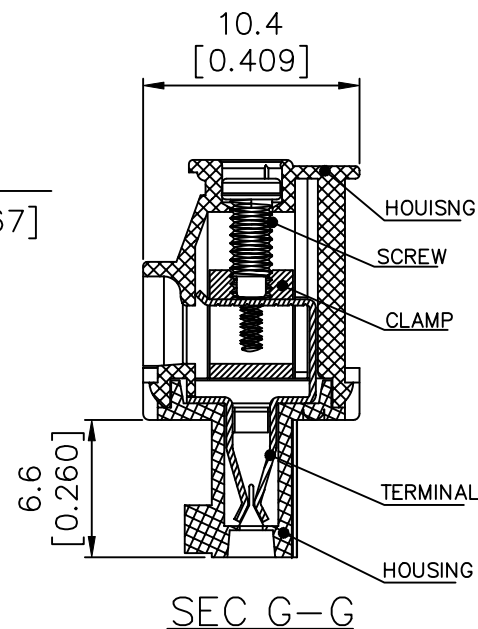
FCI CONFIDENTIAL

PRODUCT NUMBER	SERIES NAME	PITCH
20020008-CXX1B01LF	02-350	3.50 mm



□2.8x1.7
[0.110x0.067]

2p to 6p with wedge, above 7p
without wedge (including 7p)



N = Number of poles
Dim A = $N \times 3.5$ [0.138]
Dim B = $(N-1) \times 3.5$ [0.138]

TOL.	Dim A	Dim B
2-6p	±0.15 [0.006]	
7-12p	±0.20 [0.008]	
13-18p	±0.25 [0.010]	
19-24p	±0.30 [0.012]	

Material			Spec ref				
Mat code			✓	tolerance	projection	MM ←————→	
Heattreat							
Plating/Finish							
Dr	BEER FU	062509				size	Scale
Eng	BEER FU	062509	Product family			A4	
Chr	GARY HSIEH	062509	Model Name			ECN	T10-0042
Appr	JOSEPH HSIA	062509	Model Revision			REL Level	RELEASED
		title			dwg no		Rev
		TERMINAL BLOCK			20020008		D
		Pluggable plug, hook entry side					
Pro/E file		catalog no			CUSTOMER		sheet 2 of 5

REV: 2008-04-17

PDM: Rev:D

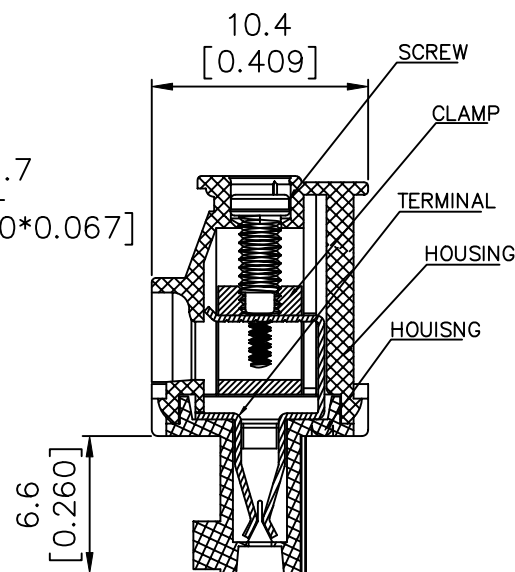
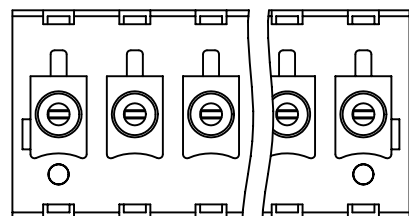
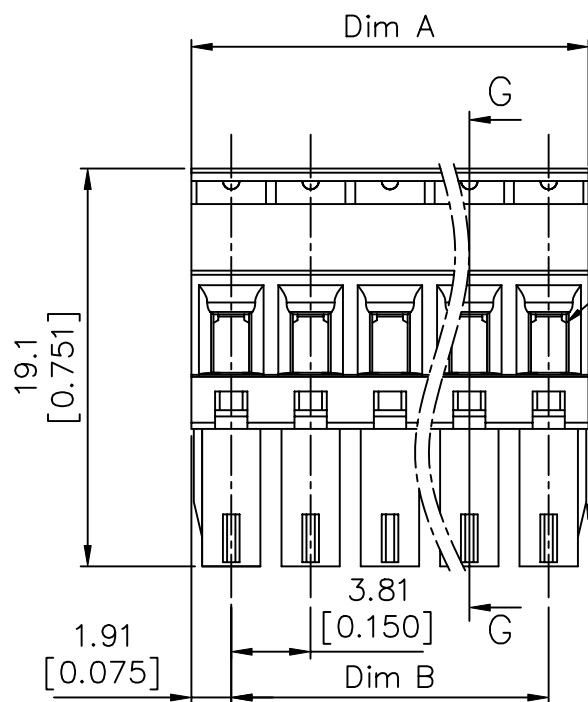
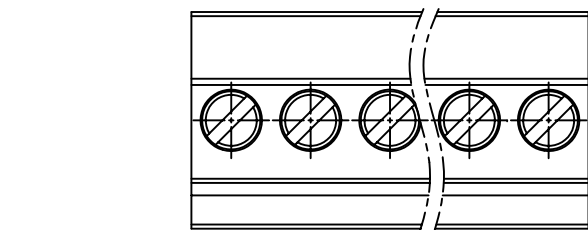
STATUS: Released Printed: May 08, 2010



This document is the property of and embodies CONFIDENTIAL and PROPRIETARY information of FCI. No part of the information shown on this document may be used in any way or disclosed to others without the written consent of FCI. Copyright FCI.

FCI CONFIDENTIAL

PRODUCT NUMBER	SERIES NAME	PITCH
20020008-DXX1B01LF	02-381	3.81 mm



SEC G-G

2p to 6p with wedge, above 7p
without wedge (including 7p)

N = Number of poles
Dim A = $N \times 3.81$ [0.150]
Dim B = $(N-1) \times 3.81$ [0.150]

TOL.	Dim A	Dim B
2-6p	± 0.15 [0.006]	
7-12p	± 0.20 [0.008]	
13-18p	± 0.25 [0.010]	
19-24p	± 0.30 [0.012]	

Material			Spec ref					
Mat code		<div>✓</div>	tolerance	projection	<div>←MM→</div>			
Heattreat								
Plating/Finish								
Dr	BEER FU	062509			size	A4	Scale	
Eng	BEER FU	062509	Product family					
Chr	GARY HSIEH	062509	Model Name		ECN		T10-0042	
Appr	JOSEPH HSIA	062509	Model Revision		REL Level		RELEASED	
<div>FCI</div>	title		TERMINAL BLOCK		dwg no		20020008	Rev
			Pluggable plug, hook entry side					D
Pro/E file	catalog no				CUSTOMER		sheet 3 of 5	

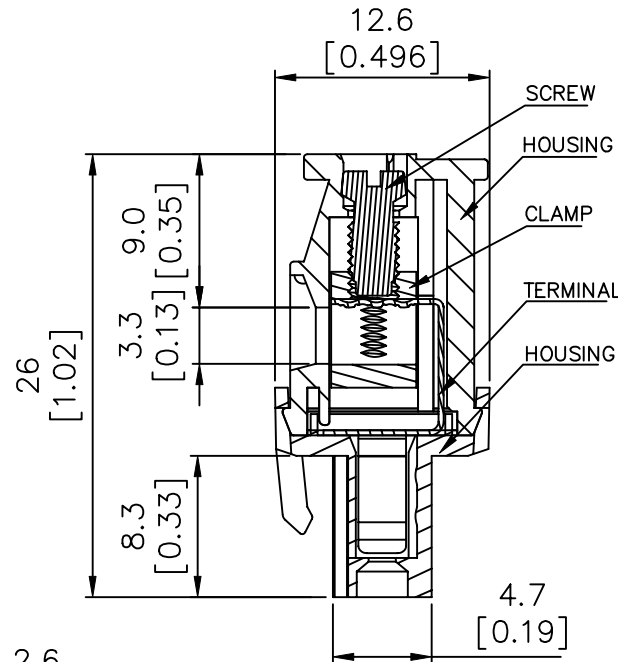
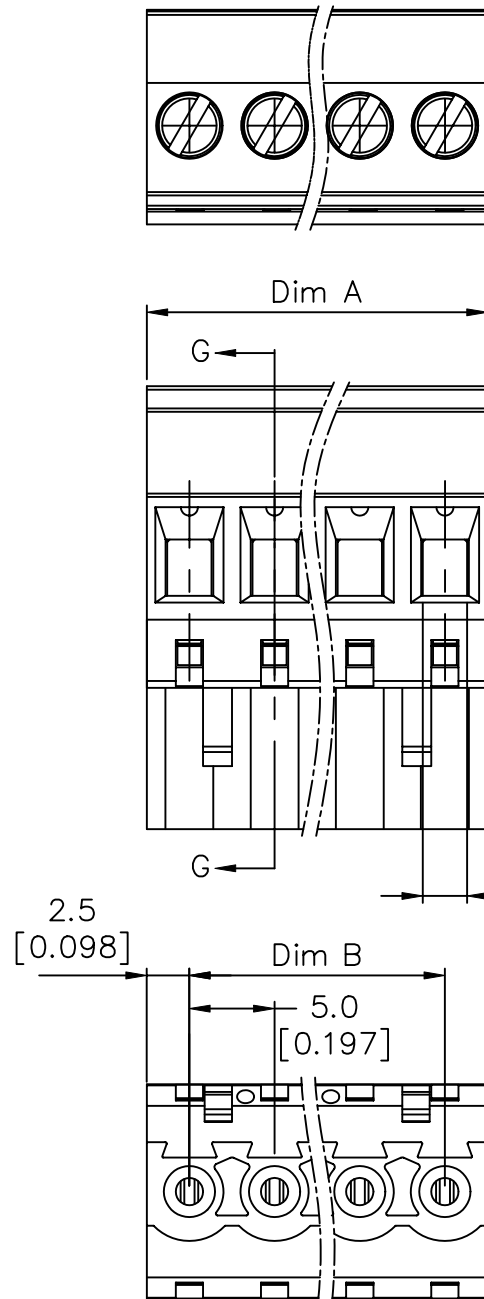
REV: 2008-04-17



This document is the property of and embodies CONFIDENTIAL and PROPRIETARY information of FCI. No part of the information shown on this document may be used in any way or disclosed to others without the written consent of FCI. Copyright FCI.

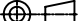

FCI CONFIDENTIAL

PRODUCT NUMBER	SERIES NAME	PITCH
20020008-GXX1B01LF	02-500	5.00 mm



N = Number of poles
Dim A = $N \times 5.0 [0.197]$
Dim B = $(N-1) \times 5.0 [0.197]$

TOL.	Dim A	Dim B
2-6p	$\pm 0.15 [0.006]$	
7-12p	$\pm 0.25 [0.010]$	
13-18p	$\pm 0.30 [0.012]$	
19-24p	$\pm 0.40 [0.016]$	

Material			Spec ref				
Mat code			✓	tolerance	projection	MM ←————→	
Heattreat							
Plating/Finish							
Dr	BEER FU	062509				size	Scale
Eng	BEER FU	062509	Product family			A4	
Chr	GARY HSIEH	062509	Model Name			ECN	T10-0042
Appr	JOSEPH HSIA	062509	Model Revision			REL Level	RELEASED
	title TERMINAL BLOCK Pluggable plug, hook entry side			dwg no	20020008		Rev. D
Pro/E file	catalog no			CUSTOMER		sheet 4 of 5	

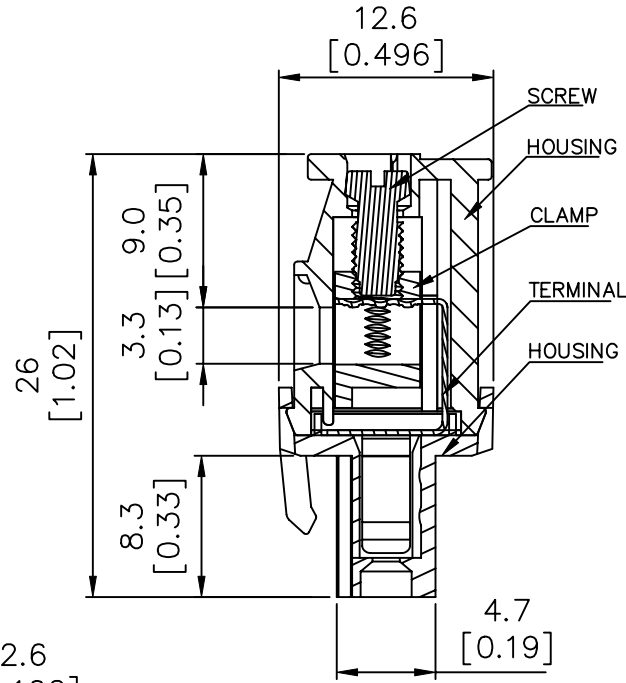
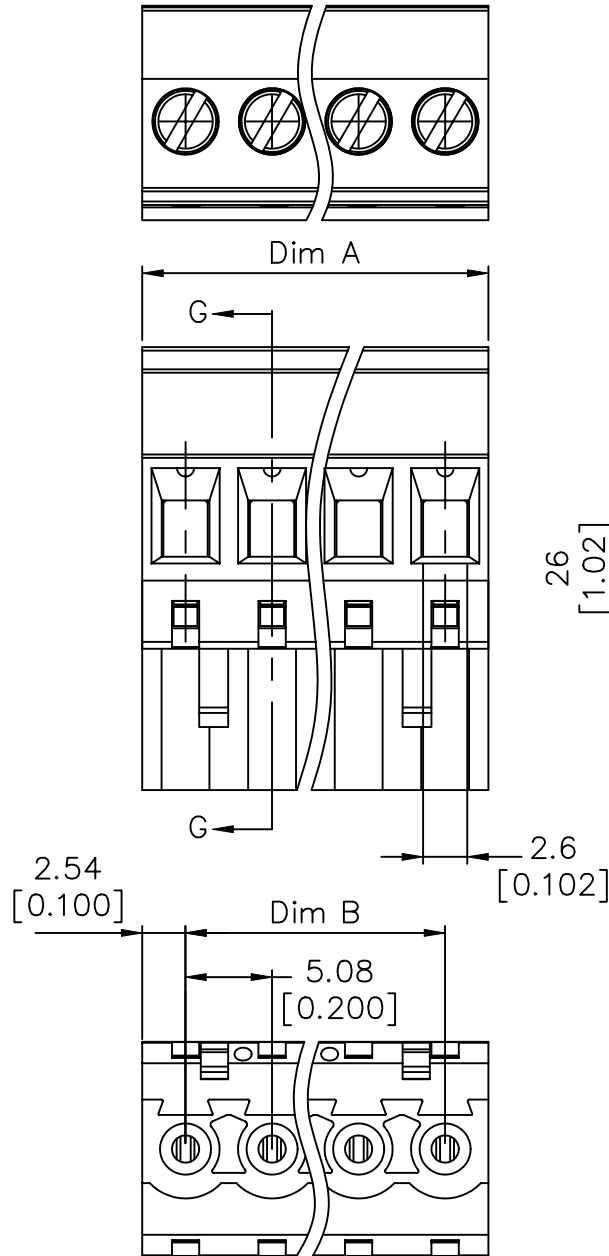
REV: 2008-04-17



This document is the property of and embodies CONFIDENTIAL and PROPRIETARY information of FCI. No part of the information shown on this document may be used in any way or disclosed to others without the written consent of FCI. Copyright FCI.

FCI CONFIDENTIAL

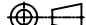

PRODUCT NUMBER	SERIES NAME	PITCH
20020008-HXX1B01LF	02-508	5.08 mm



Section G-G

N = Number of poles
Dim A = $N \times 5.08 [0.200]$
Dim B = $(N-1) \times 5.08 [0.200]$

TOL.	Dim A	Dim B
2-6p	$\pm 0.15 [0.006]$	
7-12p	$\pm 0.25 [0.010]$	
13-18p	$\pm 0.30 [0.012]$	
19-24p	$\pm 0.40 [0.016]$	

Material			Spec ref				
Mat code			✓	tolerance	projection	MM ←————→	
Heattreat							
Plating/Finish							
Dr	BEER FU	062509	size			A4	Scale
Eng	BEER FU	062509	Product family				
Chr	GARY HSIEH	062509	Model Name			ECN	T10-0042
Appr	JOSEPH HSIA	062509	Model Revision			REL Level	RELEASED
	title	TERMINAL BLOCK			dwg no	20020008	Rev. D
		Pluggable plug, hook entry side					
Pro/E file	catalog no				CUSTOMER		sheet 5 of 5

REV: 2008-06-17