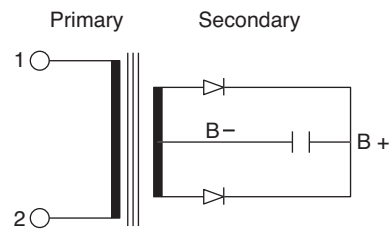
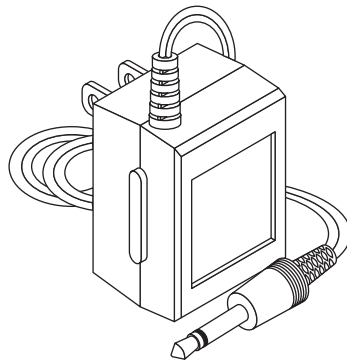


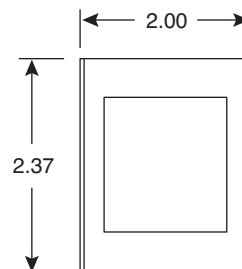
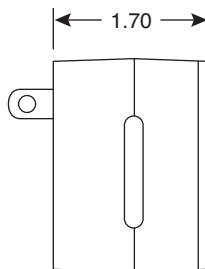


# AC/DC Adaptor

41AC113



Circuit Diagram



Dimensions: (In.)

## ■ Specifications:

- Primary voltage: 117VAC 60Hz
- Primary exciting current: 30mA max.
- Secondary voltage: 16.3VDC  $\pm 0.5V$  (no load),  
12VDC  $\pm 0.5V$  (full load)
- Rated secondary current: 200mA DC 60Hz
- Temperature rise:  $<45^{\circ}C$
- Breakdown voltage (hipot): 2000VAC 50Hz for 1 minute
- Coil~coil insulation: 100M $\Omega$  min. @ 500VDC
- Case: plastic, BB-333
- Capacitor: 470mfd x 16V
- Rectifier: IN4001 1A
- DC plug: 2.5mm male
- Cable: 6 ft.
- Polarity: tip +

