

PLEASE CHECK WWW.MOLEX.COM FOR LATEST PART INFORMATION

Part Number: [0780530001](#)
Status: **Active**
Description: 1.27mm (.050") Signal Pitch, 0.80mm (.031") SCSI Pitch, 1.27mm (.050") Power Pitch
SAS Receptacle, Reverse, SMT, Right Angle, with Beveled Metal Pins and Pegs,
4.99mm (.196") Height, 29 Circuits, Tray, Leadfree

Documents:

3D Model	Product Specification PS-78053-002 (PDF)
Drawing (PDF)	RoHS Certificate of Compliance (PDF)

Agency Certification

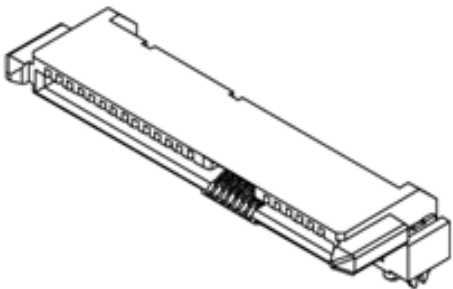
CSA	LR19980
UL	E29179

General

Product Family	I/O Connectors
Series	78053
Application	Board-to-Board
Component Type	Receptacle
Product Name	SAS
Type	N/A

Physical

Boot Color	N/A
Circuits (Loaded)	29
Circuits (maximum)	29
Circuits Detail	Signal 7, SCSI 7, Power 15
Color - Resin	Black
Durability (mating cycles max)	500
Flammability	94V-0
Gender	Female
Keying to Mating Part	Yes
Lock to Mating Part	None
Material - Metal	Copper Alloy
Material - Plating Mating	Gold
Material - Plating Termination	Tin
Material - Resin	Nylon
Number of Rows	2
Orientation	Right Angle
PCB Locator	Yes
PCB Retention	Yes
PCB Thickness Recommended (in)	0.047 In
PCB Thickness Recommended (mm)	1.20 mm
Packaging Type	Tray
Panel Mount	Yes
Pitch - Mating Interface (in)	0.031 In, 0.050 In
Pitch - Mating Interface (mm)	0.80 mm, 1.27 mm
Pitch - Term. Interface (in)	0.031 In, 0.050 In
Pitch - Term. Interface (mm)	0.80 mm, 1.27 mm
Plating min: Mating (µin)	30
Plating min: Mating (µm)	0.76
Plating min: Termination (µin)	102
Plating min: Termination (µm)	2.54
Polarized to Mating Part	Yes
Polarized to PCB	Yes
Surface Mount Compatible (SMC)	N/A



Series

image - Reference only

EU RoHS

**ELV and RoHS
Compliant**

REACH SVHC

Not Reviewed

Halogen-Free

Status

Not Reviewed

China RoHS



**Need more information on product
environmental compliance?**

Email productcompliance@molex.com
For a multiple part number RoHS Certificate of
Compliance, [click here](#)

Please visit the [Contact Us](#) section for any
non-product compliance questions.

Search Parts in this Series

[78053Series](#)

Mates With

SFF-8482 Hard Disk Drive and Backplane
Plug. [87679](#) Serial ATA Device Plug with
Latch. [87703](#) Serial ATA Device Plug
without Jumper. [87799](#) Serial ATA Device
Plug with Jumper

Temperature Range - Operating	0°C to +55°C
Termination Interface: Style	Surface Mount
Waterproof / Dustproof	No
Wire Size AWG	N/A

Electrical

Current - Maximum per Contact	1.5A
Shielded	No
Voltage - Maximum	30V

Solder Process Data

Duration at Max. Process Temperature (seconds)	10
Lead-free Process Capability	Reflow Capable (SMT only)
Max. Cycles at Max. Process Temperature	1
Process Temperature max. C	260

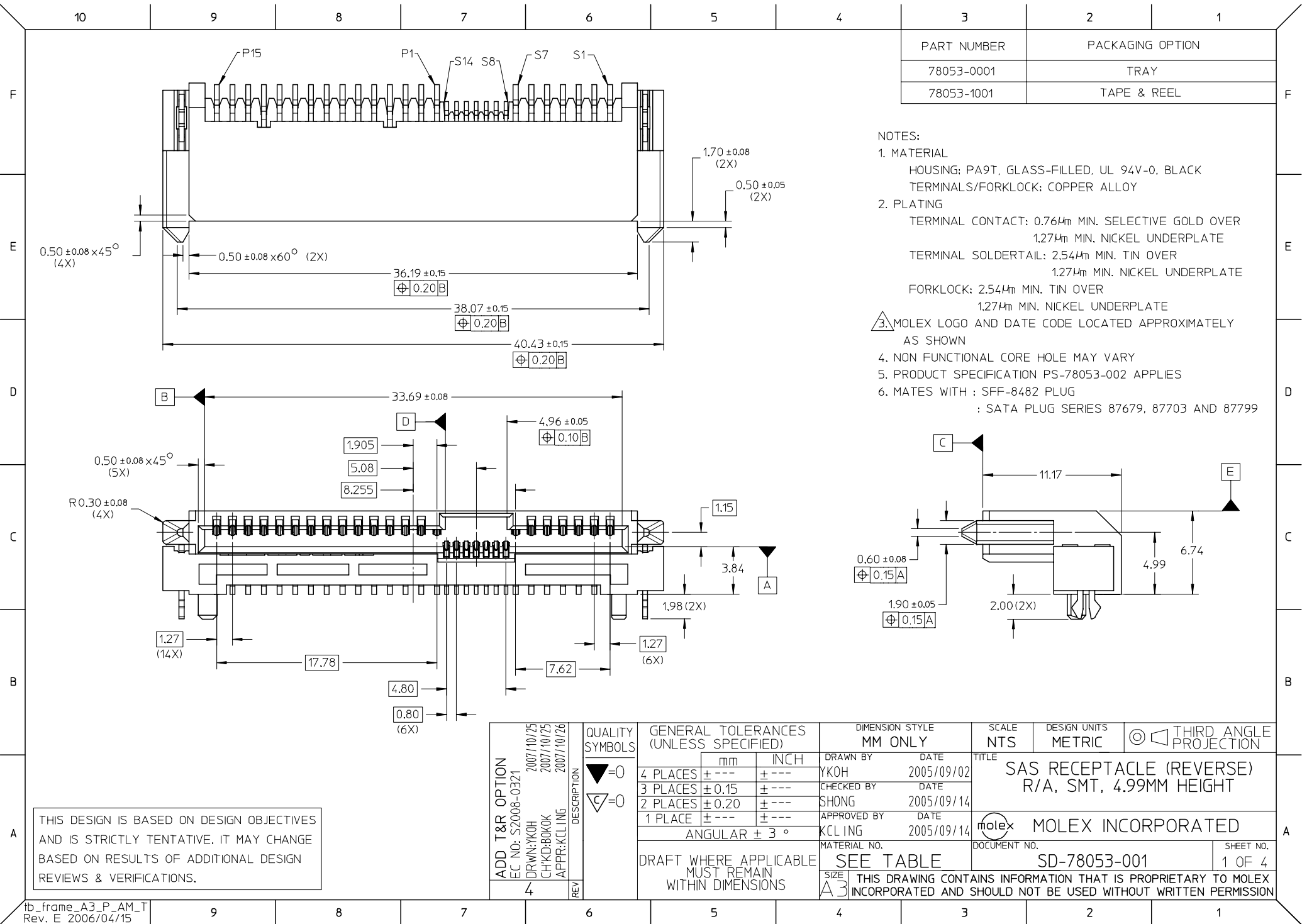
Material Info

Reference - Drawing Numbers

Product Specification	PS-78053-002
Sales Drawing	SD-78053-001

This document was generated on 04/07/2010

PLEASE CHECK WWW.MOLEX.COM FOR LATEST PART INFORMATION



THIS DESIGN IS BASED ON DESIGN OBJECTIVES AND IS STRICTLY TENTATIVE. IT MAY CHANGE BASED ON RESULTS OF ADDITIONAL DESIGN REVIEWS & VERIFICATIONS.

ADD T&R OPTION
EC NO: S2008-0321
2007/10/25
DRWN:YKH
CHKD:BOKK
2007/10/25
APPR:KCLING
2007/10/26

QUALITY SYMBOLS
▽=0
▽=0

GENERAL TOLERANCES (UNLESS SPECIFIED)

	mm	INCH
4 PLACES	± ---	± ---
3 PLACES	± 0.15	± ---
2 PLACES	± 0.20	± ---
1 PLACE	± ---	± ---

ANGULAR ± 3 °

DRAFT WHERE APPLICABLE
MUST REMAIN
WITHIN DIMENSIONS

DIMENSION STYLE
MM ONLY

DRAWN BY	DATE
YKH	2005/09/02

CHECKED BY	DATE
SHONG	2005/09/14

APPROVED BY	DATE
KCLING	2005/09/14

MATERIAL NO.

SIZE
A3

SEE TABLE

SCALE
NTS

DESIGN UNITS
METRIC

THIRD ANGLE
PROJECTION

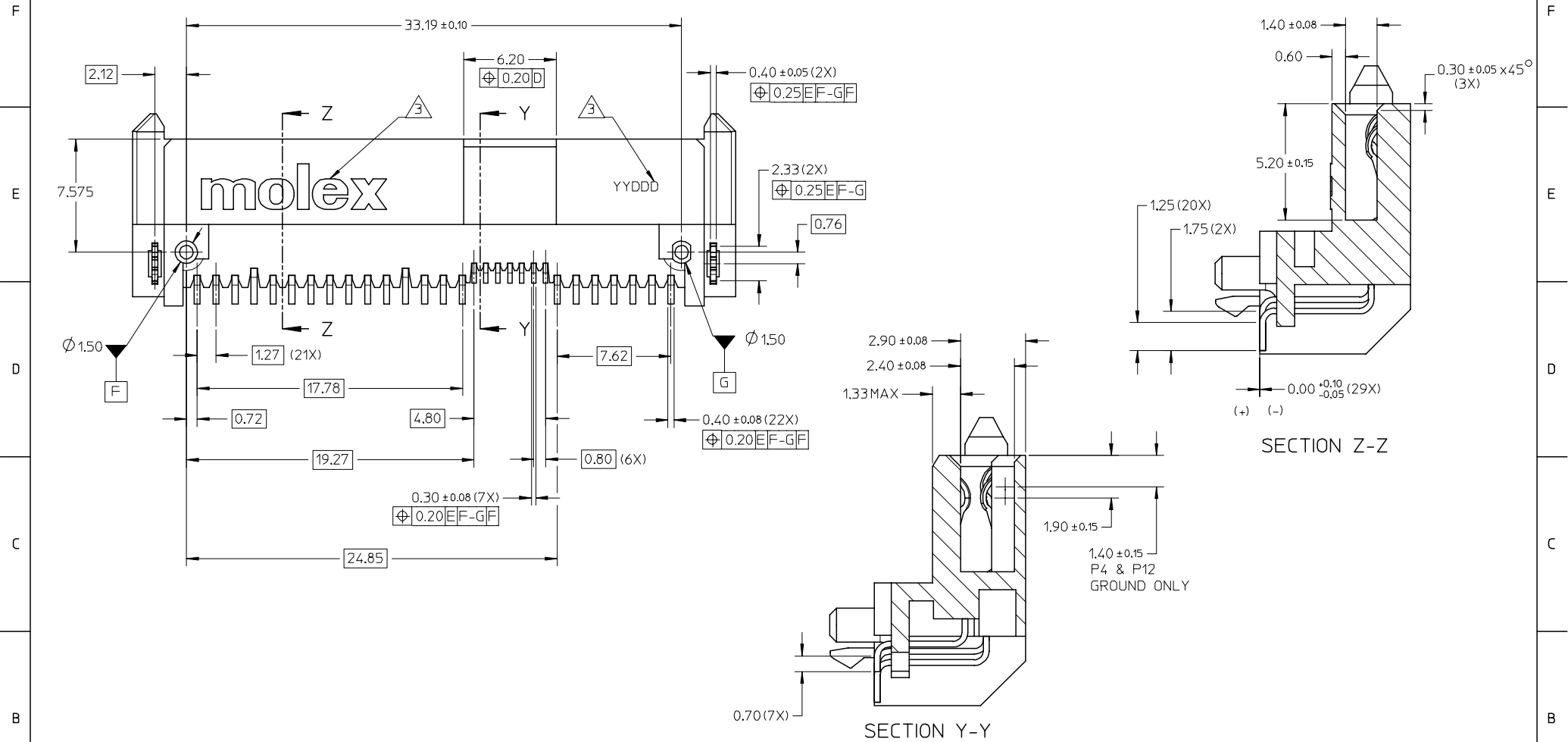
TITLE
SAS RECEPTACLE (REVERSE)
R/A, SMT, 4.99MM HEIGHT

MOLEX
MOLEX INCORPORATED

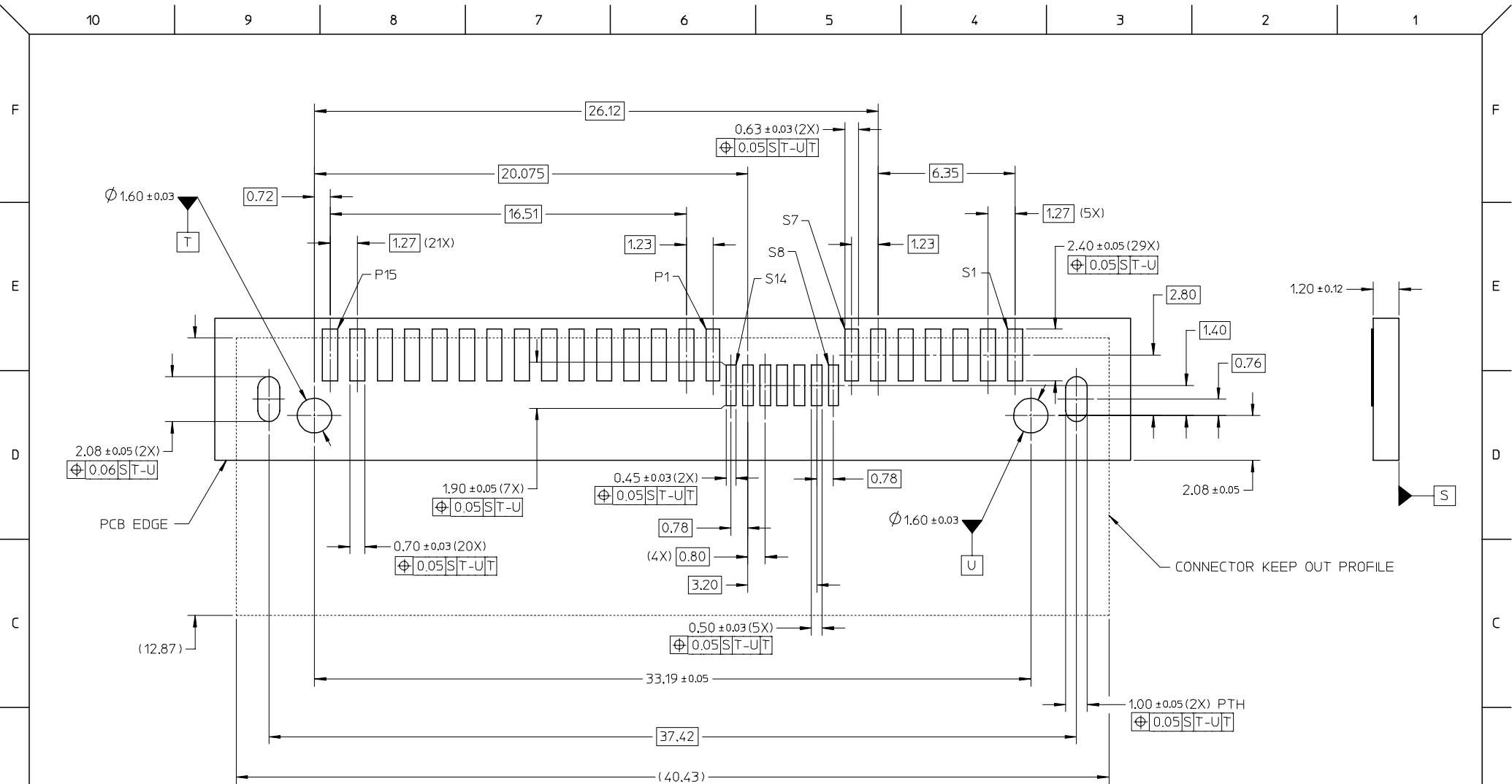
DOCUMENT NO.
SD-78053-001

SHEET NO.
1 OF 4

10 9 8 7 6 5 4 3 2 1



A	<div>THIS DESIGN IS BASED ON DESIGN OBJECTIVES AND IS STRICTLY TENTATIVE. IT MAY CHANGE BASED ON RESULTS OF ADDITIONAL DESIGN REVIEWS & VERIFICATIONS.</div>	ADD T&R OPTION EC NO: S2008-0321 DRWN:YKOH CHKD:BOKOK APPR:KCLING 4	2007/10/25 2007/10/25 2007/10/26	DESCRIPTION REV	QUALITY SYMBOLS ▽=0 ▽C=0	GENERAL TOLERANCES (UNLESS SPECIFIED)			DIMENSION STYLE MM ONLY		SCALE NTS	DESIGN UNITS METRIC	THIRD ANGLE PROJECTION				
								DRAWN BY YKOH		DATE 2005/09/02		TITLE SAS RECEPTACLE (REVERSE) R/A, SMT, 4.99MM HEIGHT					
						4 PLACES ± ---		± ---		CHECKED BY SHONG						DATE 2005/09/14	
						3 PLACES ± 0.15		± ---		APPROVED BY KCLING						DATE 2005/09/14	
						2 PLACES ± 0.20		± ---									
						1 PLACE ± ---		± ---		ANGULAR ± 3 °		MATERIAL NO.		DOCUMENT NO.		SHEET NO.	
										DRAFT WHERE APPLICABLE MUST REMAIN WITHIN DIMENSIONS		SEE TABLE		SD-78053-001		2 OF 4	
						SIZE A3		THIS DRAWING CONTAINS INFORMATION THAT IS PROPRIETARY TO MOLEX INCORPORATED AND SHOULD NOT BE USED WITHOUT WRITTEN PERMISSION									



RECOMMENDED PCB LAYOUT

THIS DESIGN IS BASED ON DESIGN OBJECTIVES AND IS STRICTLY TENTATIVE. IT MAY CHANGE BASED ON RESULTS OF ADDITIONAL DESIGN REVIEWS & VERIFICATIONS.

ADD T&R OPTION EC NO: S2008-0321 DRWN:YKH CHKD:BOK APPR:KCLING	2007/10/25	DESCRIPTION REV
	2007/10/25	
	2007/10/26	
	2007/10/26	

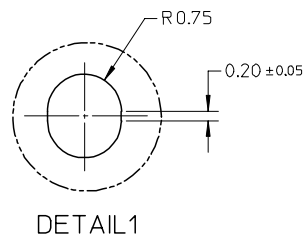
QUALITY SYMBOLS
▽=0
▽=0

GENERAL TOLERANCES (UNLESS SPECIFIED)		
	mm	INCH
4 PLACES	± ---	± ---
3 PLACES	± 0.15	± ---
2 PLACES	± 0.20	± ---
1 PLACE	± ---	± ---
ANGULAR ± 3 °		
DRAFT WHERE APPLICABLE MUST REMAIN WITHIN DIMENSIONS		

DIMENSION STYLE MM ONLY	
DRAWN BY	DATE
YKH	2005/09/02
CHECKED BY	DATE
SHONG	2005/09/14
APPROVED BY	DATE
KCLING	2005/09/14
MATERIAL NO.	
SEE TABLE	
SIZE	
A3	

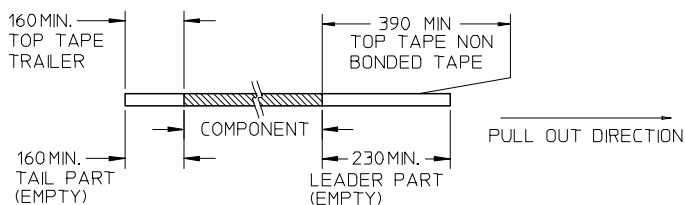
SCALE NTS	DESIGN UNITS METRIC	THIRD ANGLE PROJECTION	
TITLE SAS RECEPTACLE (REVERSE) R/A, SMT, 4.99MM HEIGHT			
MOLEX INCORPORATED			
DOCUMENT NO. SD-78053-001			SHEET NO. 3 OF 4
THIS DRAWING CONTAINS INFORMATION THAT IS PROPRIETARY TO MOLEX SHOULD NOT BE USED WITHOUT WRITTEN PERMISSION			

PARTIAL1
SECTION Z-Z

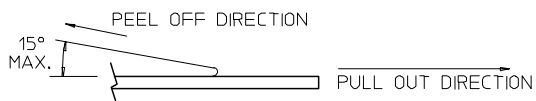


NOTES:

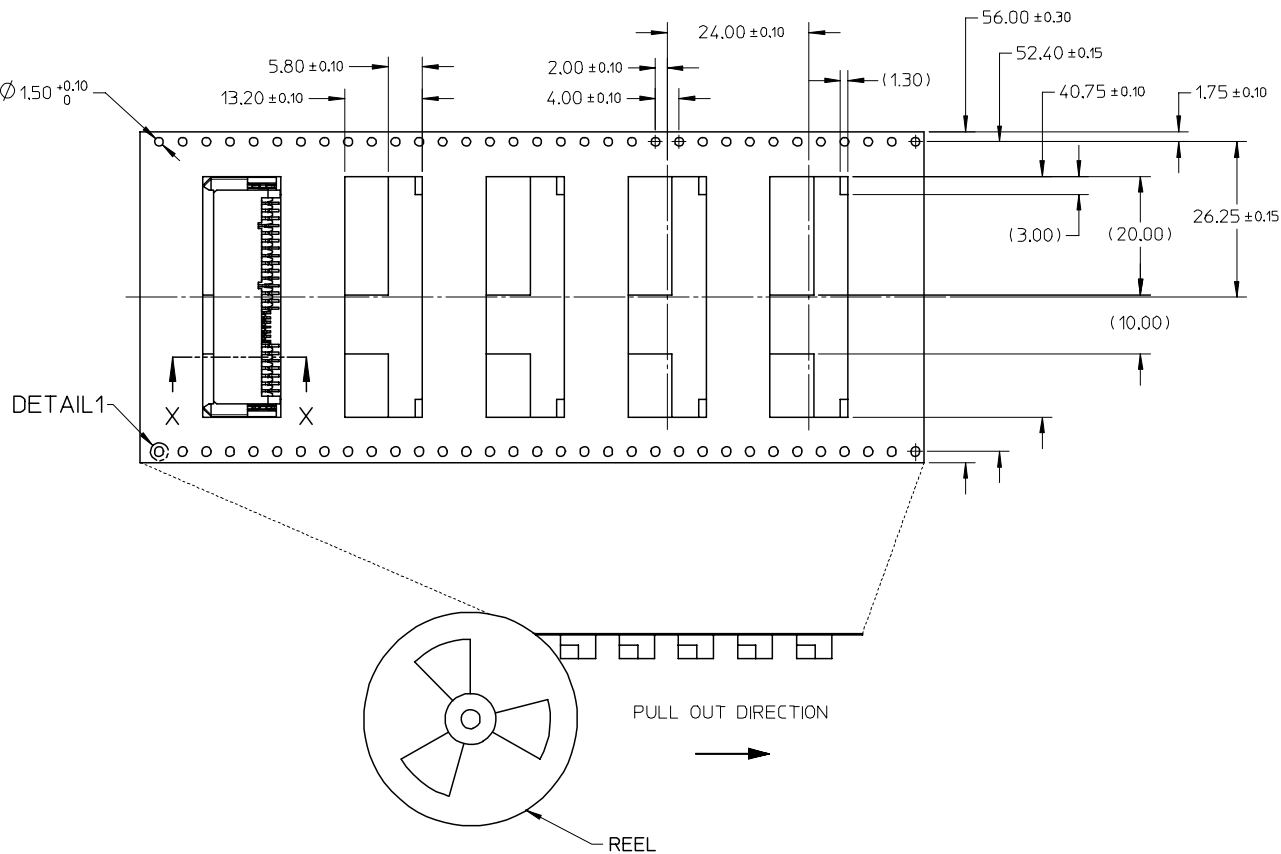
1. LEADER AND TRAILER TAPE




2. PEELING OFF FORCE OF THE TOP TAPE: 20 - 80gf.
(PEELING DIRECTION AS SHOWN IN FOLLOWING FIGURE)



3. TAPE AND REEL SPECIFICATION IS AS PER EIA-481.
4. TAPE AND REEL QUANTITY : 250 PCS/ REEL.
5. THE TAPE IS TREATED FOR ANTI-STATIC.



THIS DESIGN IS BASED ON DESIGN OBJECTIVES
AND IS STRICTLY TENTATIVE. IT MAY CHANGE
BASED ON RESULTS OF ADDITIONAL DESIGN
REVIEWS & VERIFICATIONS.

ADD T&R OPTION EC NO: S2008-0321 DRWN:YKOH 2007/10/25 CHKD:BOKOK 2007/10/25 APPR:KCLING 2007/10/26		DESCRIPTION	QUALITY SYMBOLS ▽=0 ▽C=0	GENERAL TOLERANCES (UNLESS SPECIFIED)		DIMENSION STYLE MM ONLY		SCALE NTS	DESIGN UNITS METRIC	THIRD ANGLE PROJECTION 	
4	REV				mm	INCH	DRAWN BY YKOH	DATE 2005/09/02	TITLE SAS RECEPTACLE (REVERSE) R/A, SMT, 4.99MM HEIGHT		
				4 PLACES	± ---	± ---	CHECKED BY	DATE			
				3 PLACES	± 0.15	± ---	SHONG	2005/09/14	MOLEX INCORPORATED		
				2 PLACES	± 0.20	± ---	APPROVED BY	DATE			
				1 PLACE	± ---	± ---	KCLING	2005/09/14			
ANGULAR ± 3 °		MATERIAL NO.		DOCUMENT NO.		SHEET NO.					
DRAFT WHERE APPLICABLE MUST REMAIN WITHIN DIMENSIONS		SEE TABLE		SD-78053-001		4 OF 4					