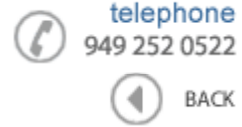




Data Sheet



Product Category: IF SAW Filter

Part Number	Package	Application	Last Modified
821-IF56.25M-A	20.0 x 9.8mm SMD	IF SAW Filter	Mar. 10, 2007

TYPE :

56MHz IF SAW Filter



PART NUMBER :

821-IF56.25M-A

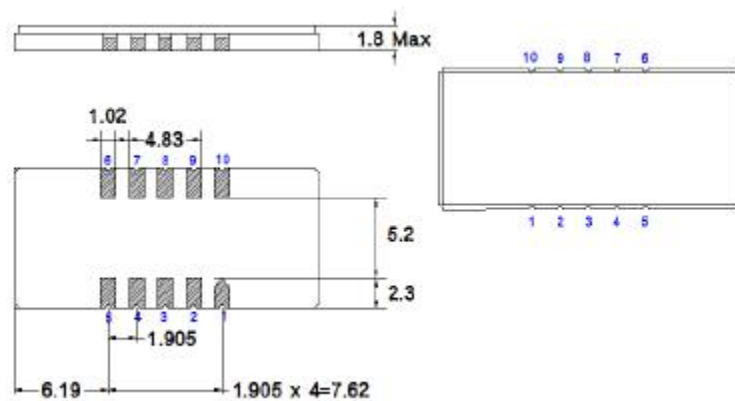
OPERATING CONDITIONS / ELECTRICAL CHARACTERISTICS

PARAMETERS	Minimum	Typical	Maximum	Units
Center Frequency	-	56.25	-	MHz
Insertion Loss	-	18.8	20.5	dB
Source Impedance (single ended)*	-	50	-	ohm
Load Impedance (single ended)*	-	50	-	ohm
Bandwidth -1.0 dB	9.8	9.92	-	MHz
Bandwidth -3.0 dB	10.3	10.45	-	MHz
Bandwidth -40.0 dB	-	12.55	12.7	MHz
Bandwidth -50.0 dB	-	12.77	12.9	dB
Amplitude Ripple (Fo +/-9.75MHz)	-	0.7	1.0	dBp-p
Attenuation Rejection	50	55	-	dB
Group Delay Variation	-	50	100	nsec
Absolute Delay @ Fo	-	1.84	-	µsec
Temperature Coefficient	-	-72	-	ppm/°C

*With Matching Network(ref. Testing Environment Circuit as shown below).

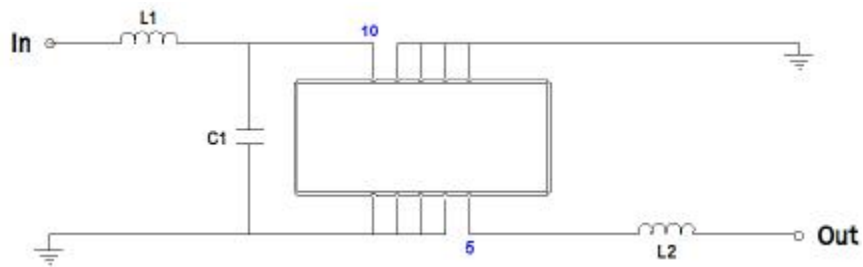
Those impedances could be modified with different impedance values and/or structures, if necessary.

PACKAGE OUTLINE (mm)



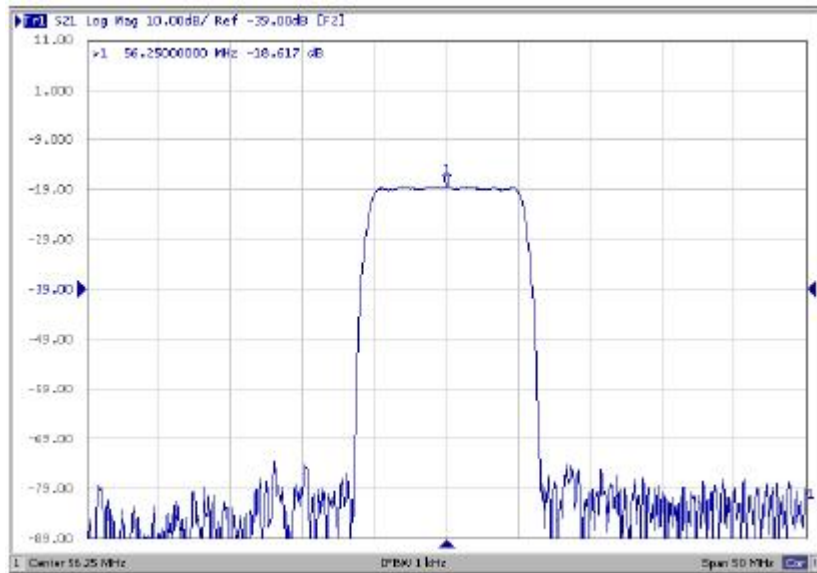
PIN Descriptions: IN-10, OUT-5, GROUND-1,2,3,4,6,7,8,9

TEST FIXTURE



$L1 = 180\text{nH}$ $C1 = 20\text{pF}$
 $L2 = 150\text{nH}$ - -
 Source/Load Impedance = 50 ohms

Frequency Response



Oscilent Corporation - CALL 949.252.0522

Part No.: 821-56.25M-A

18195 East McDermott Street, Building D, Irvine, CA 92614, USA
 Fax: 949.252.0599, E-Mail: Sales@Oscilent.com